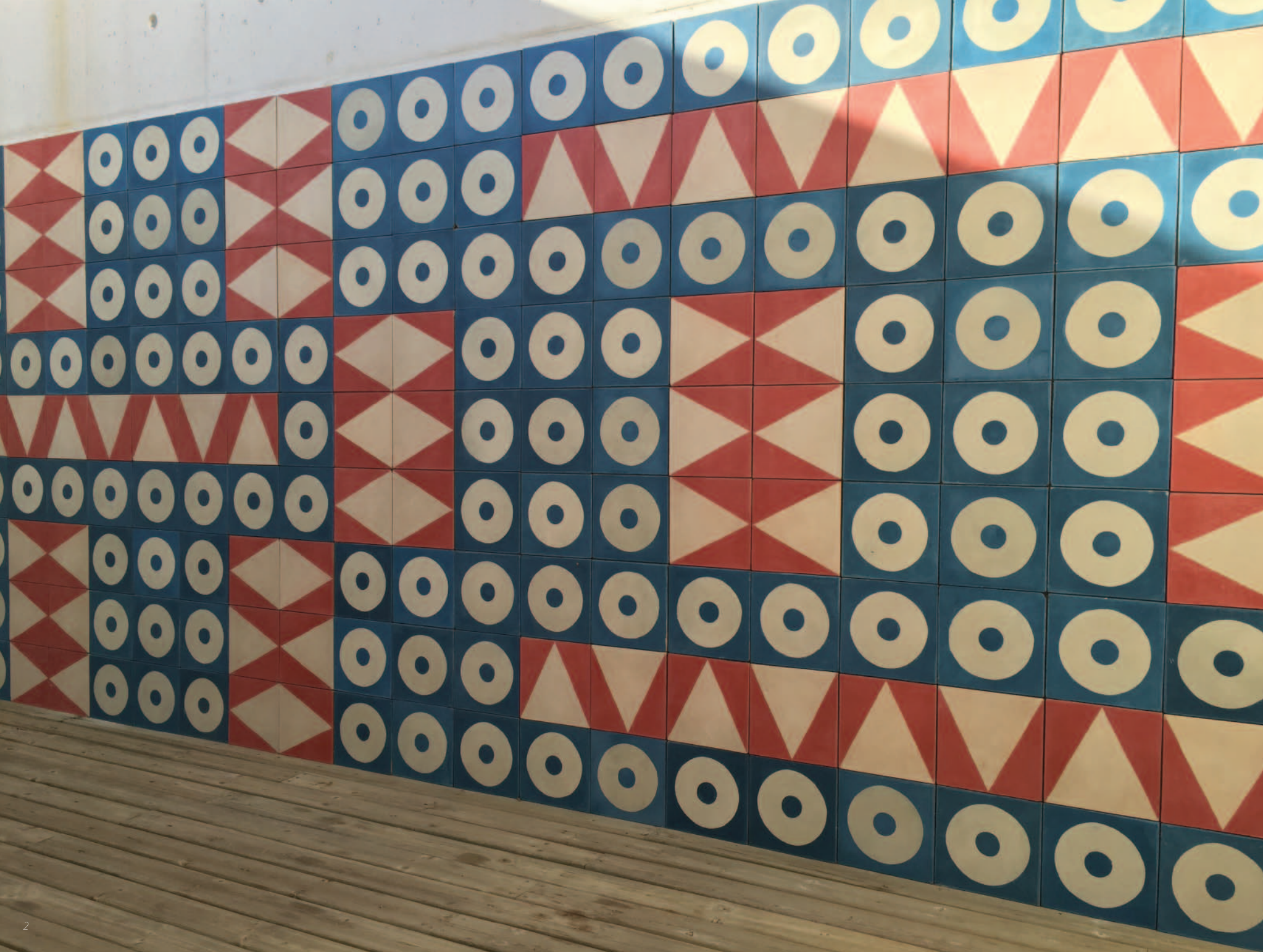




Shille

■ HUGUET

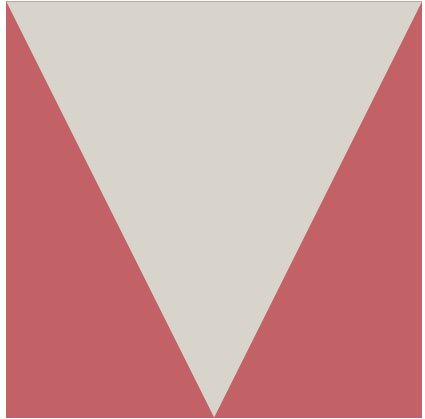




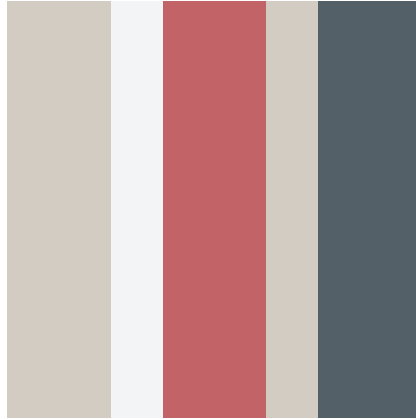
hylla

*Taking the traditional hydraulic tile found in Mediterranean architecture, the spanish designer has adapted it to contemporary design exploring new colours and patterns and offering endless decorative possibilities.*

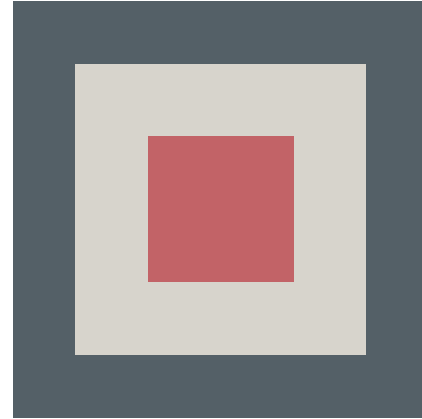
## SYBILLA designs



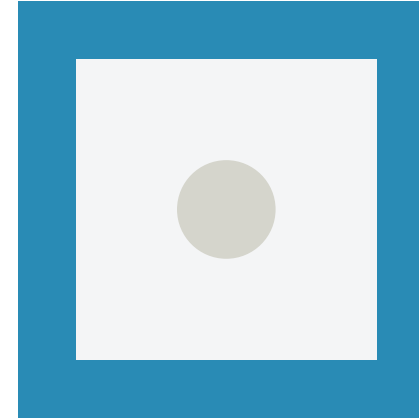
*Triangle*



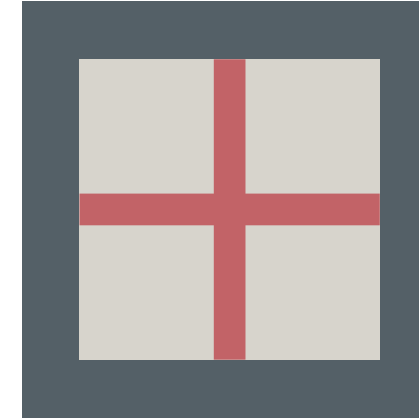
*Retxes*



*Quadrats*



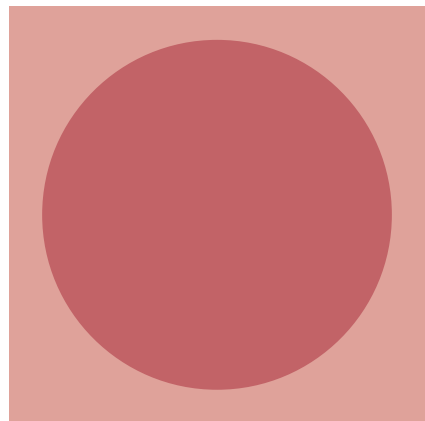
*Punt*



*Creu*



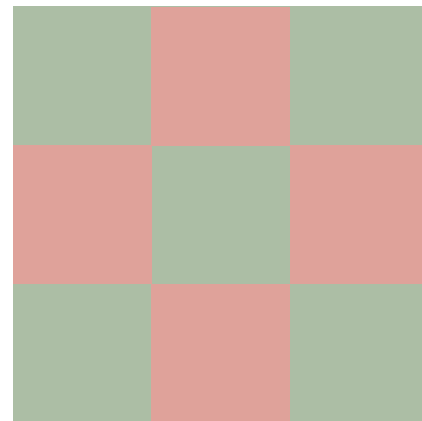
*Ics*



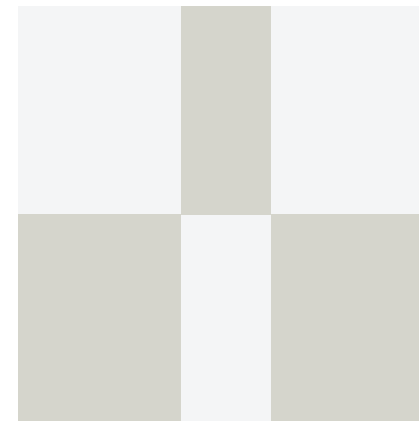
*Un cercle*



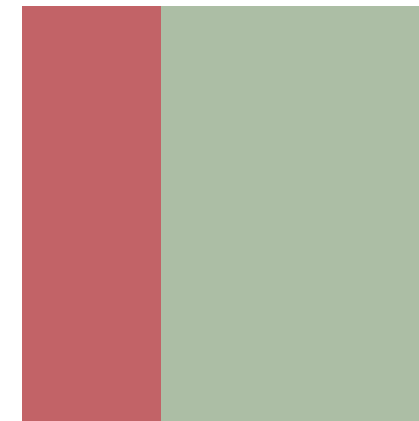
*Dos cercles*



*9 daus*



*6 daus*



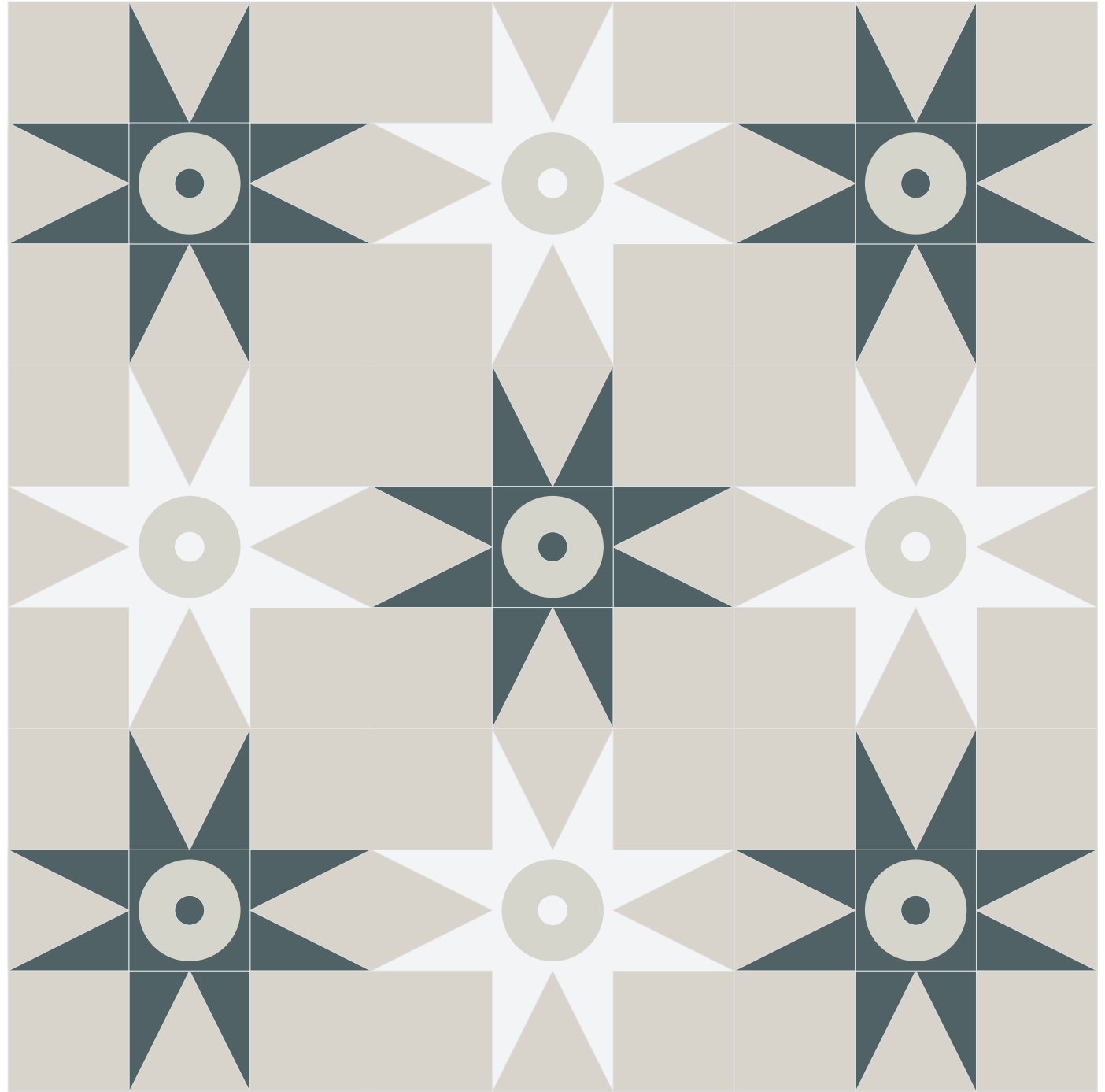
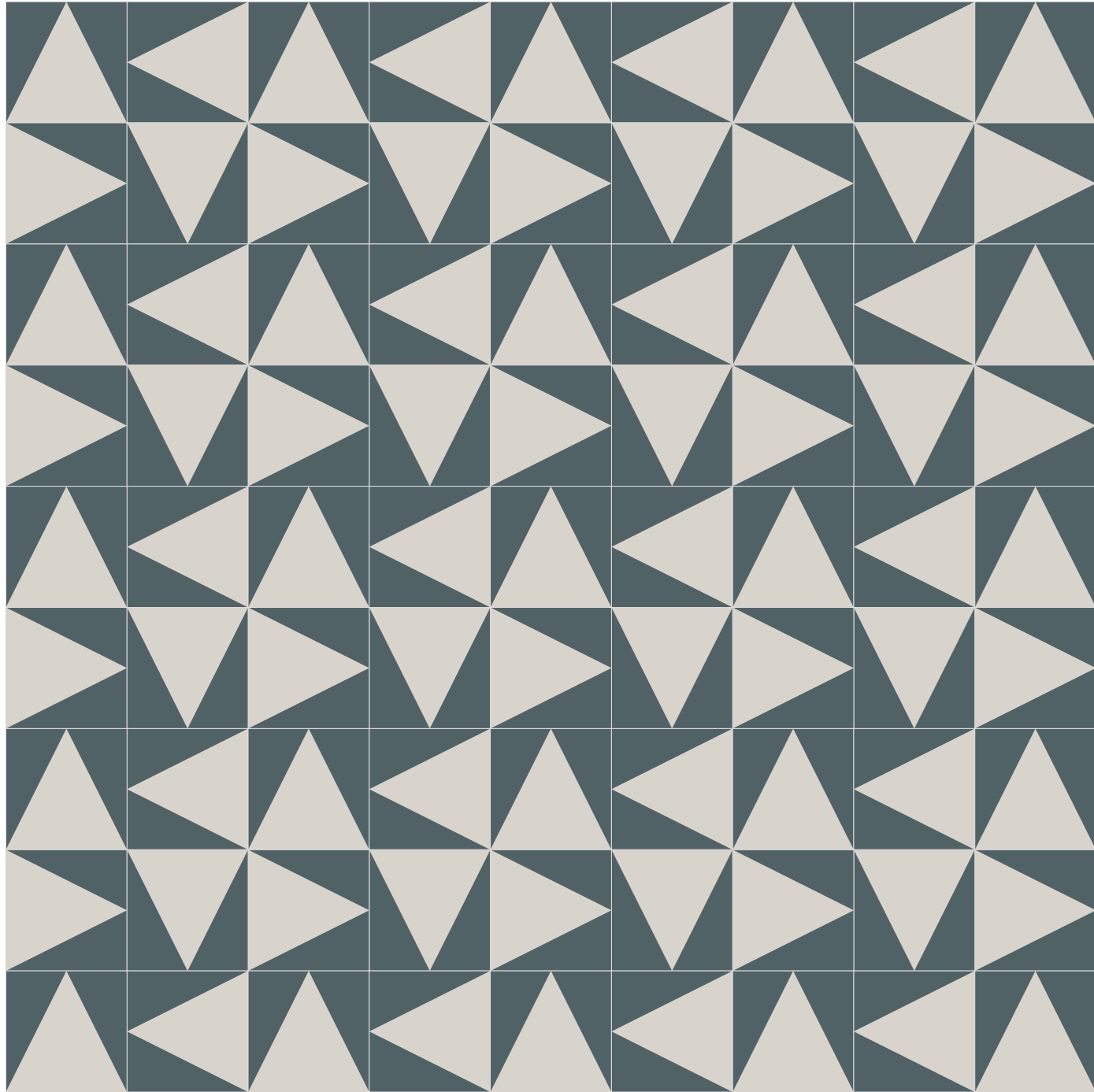
*Terç*



*Trunyella*

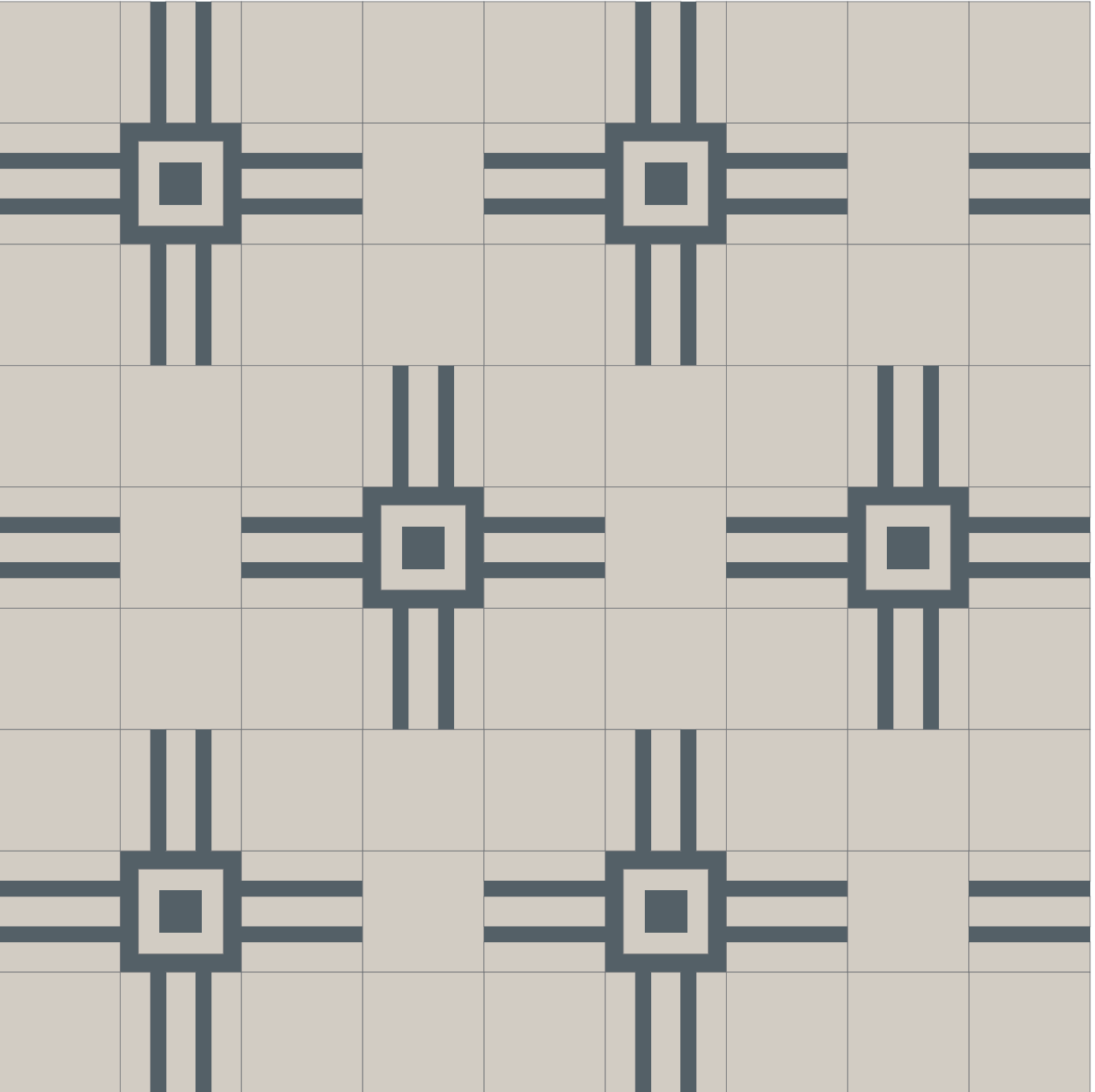
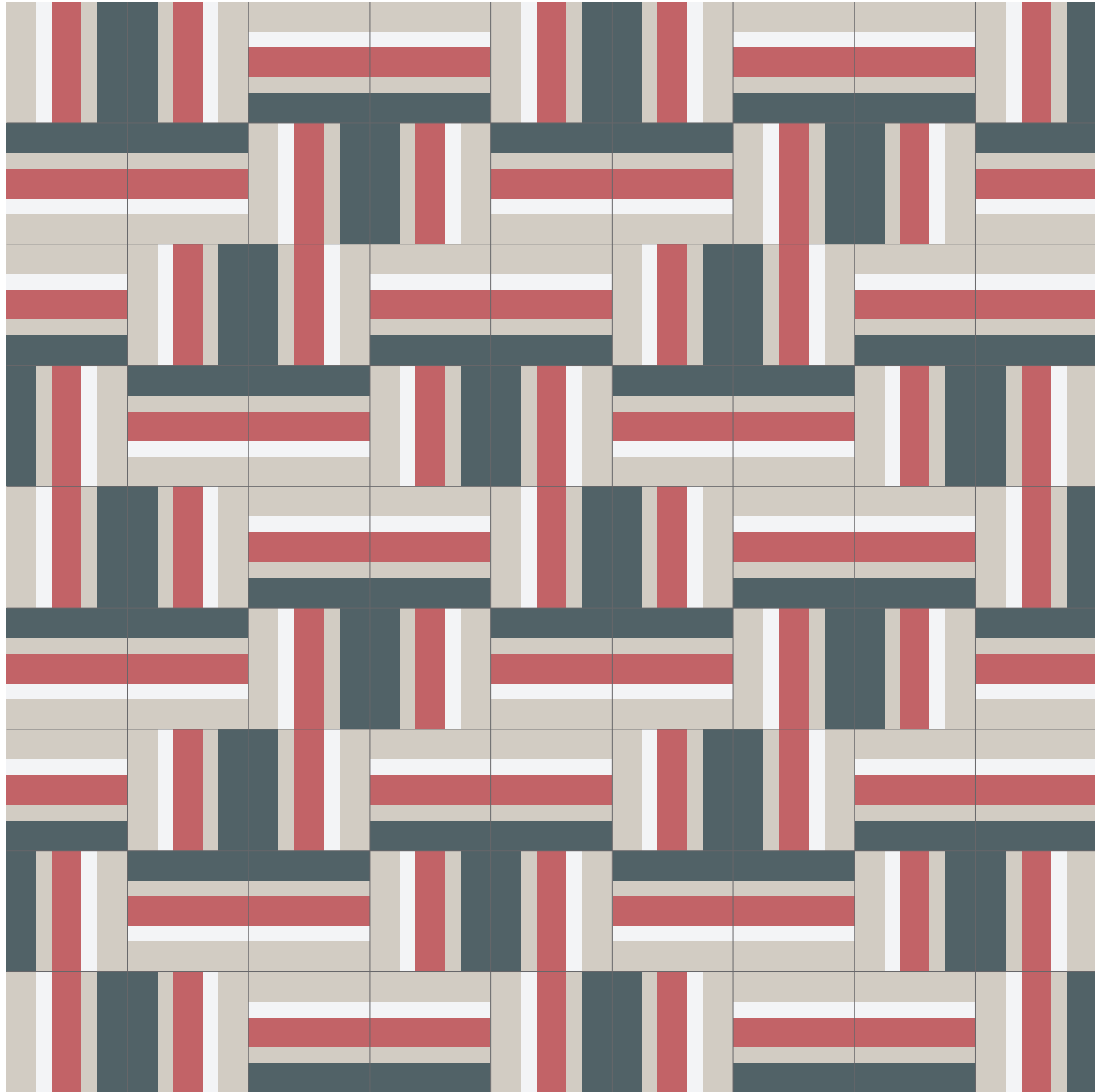




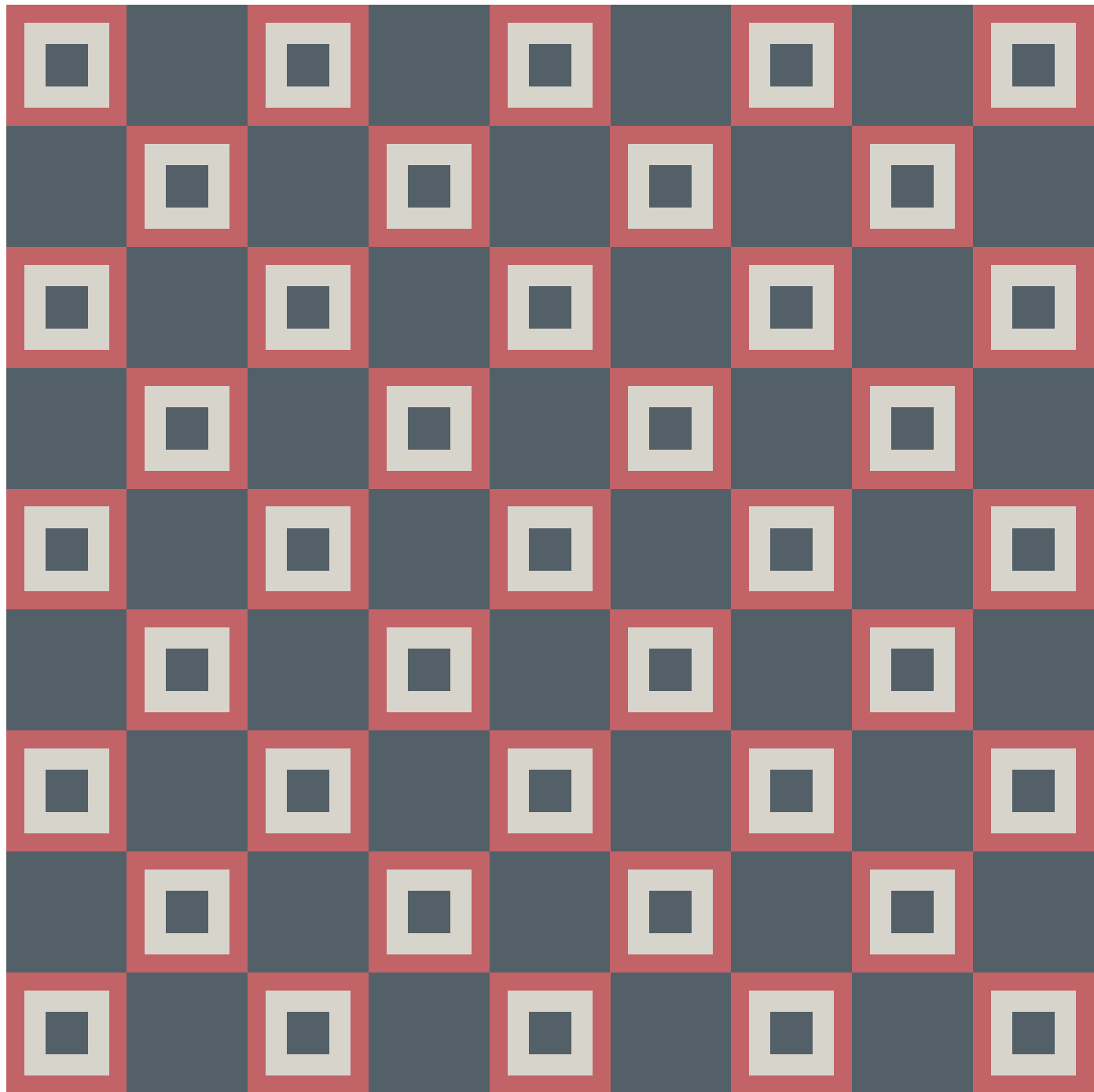


*We are sun, light, sea...*

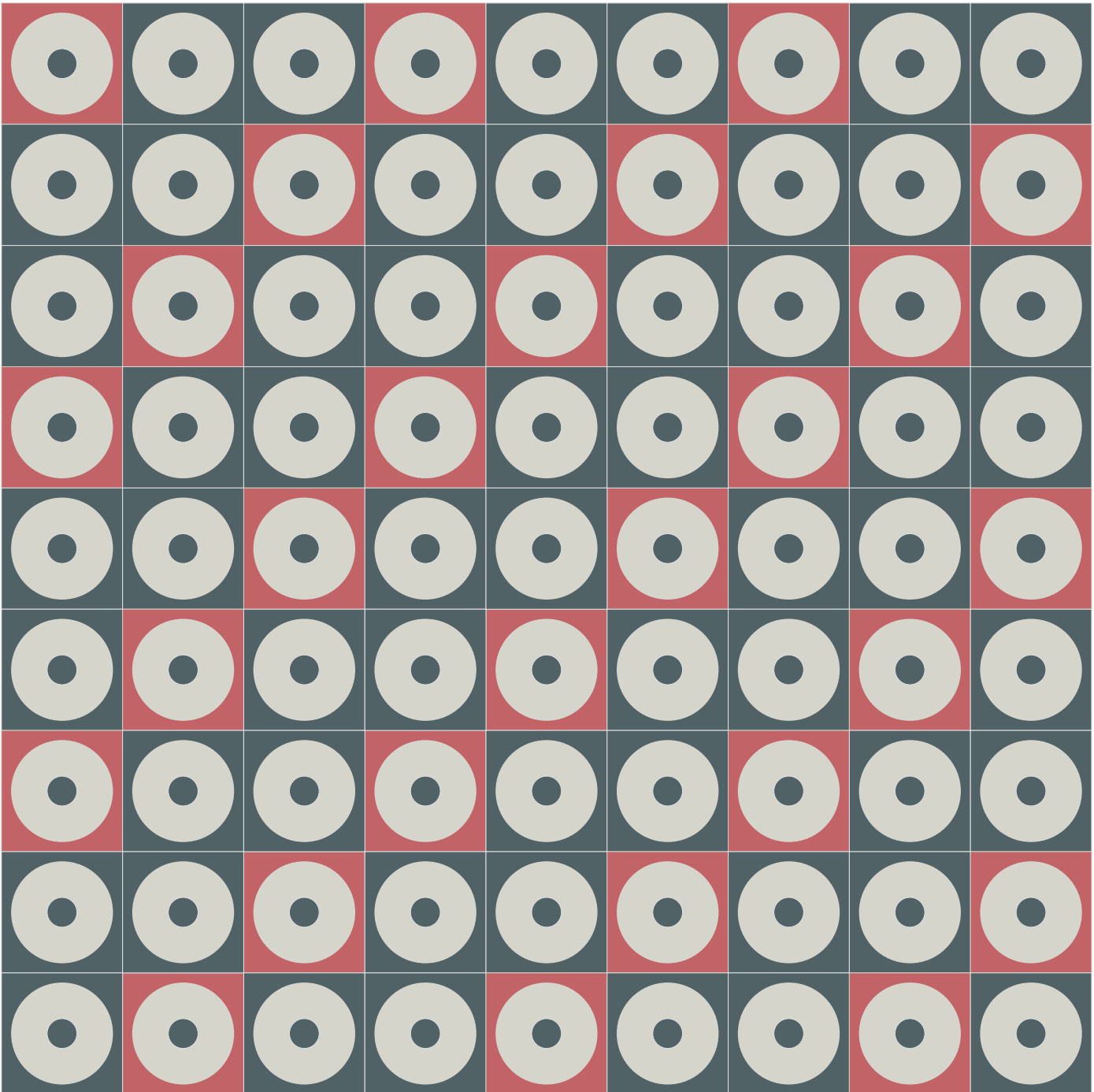
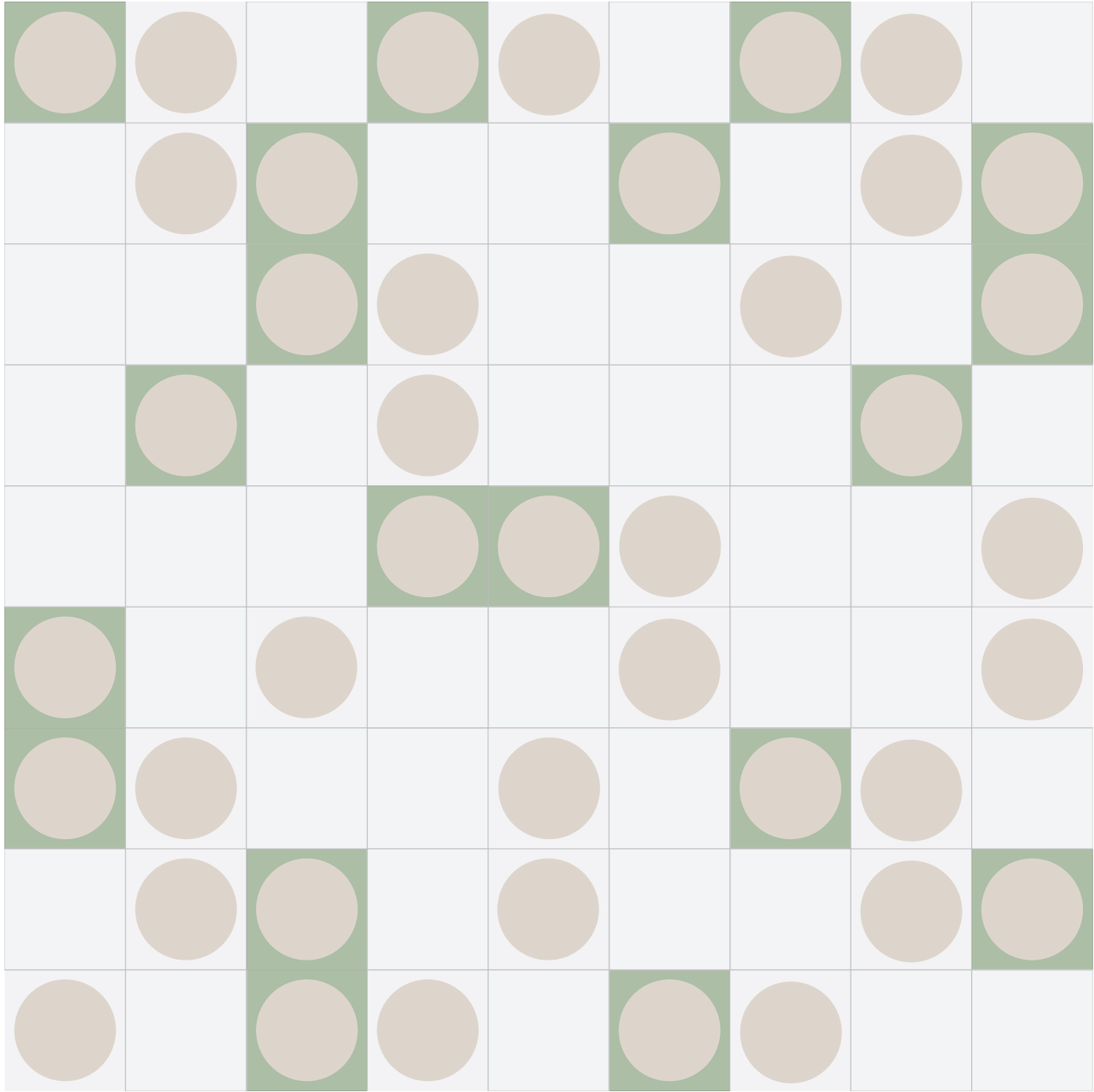


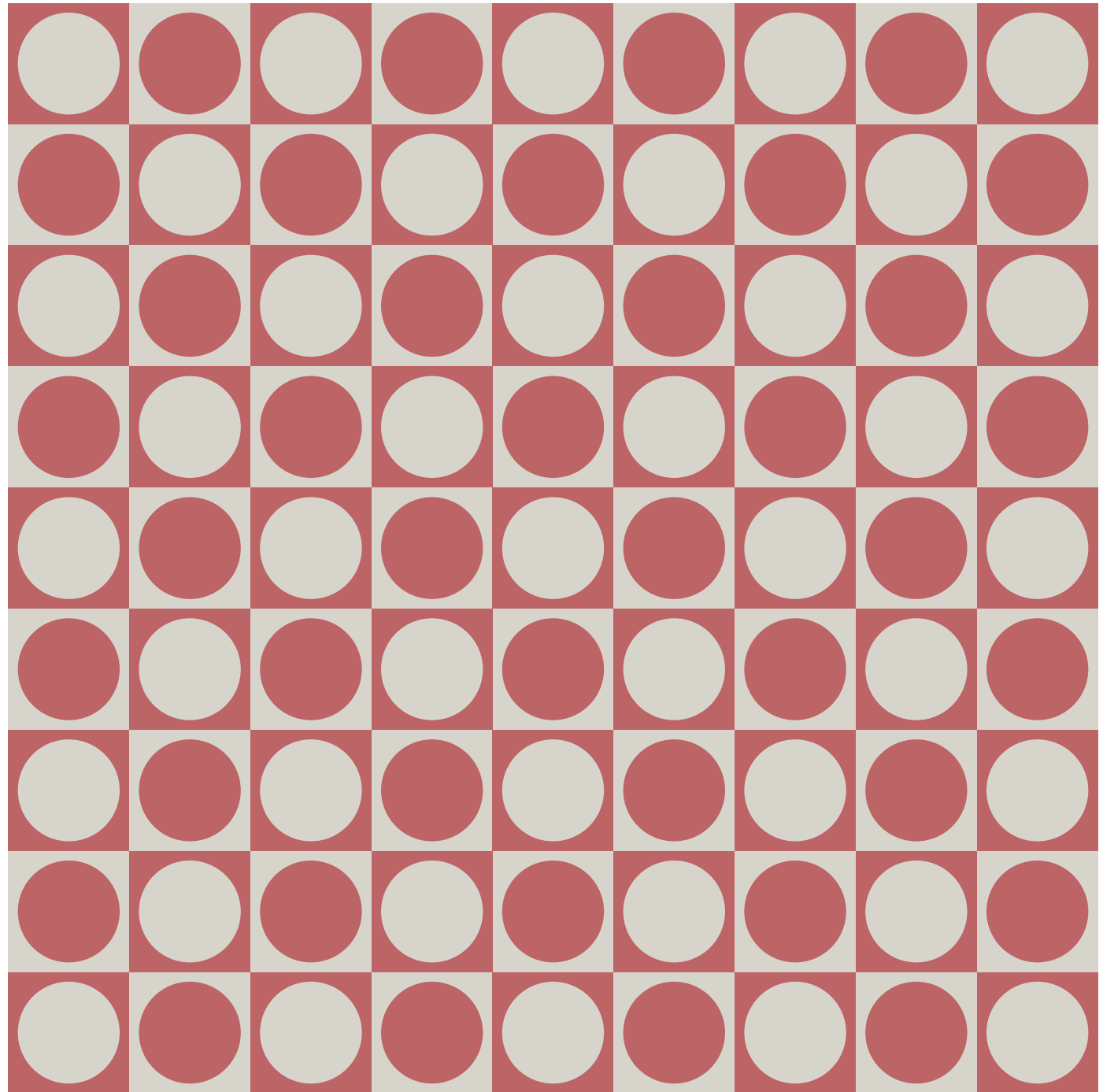
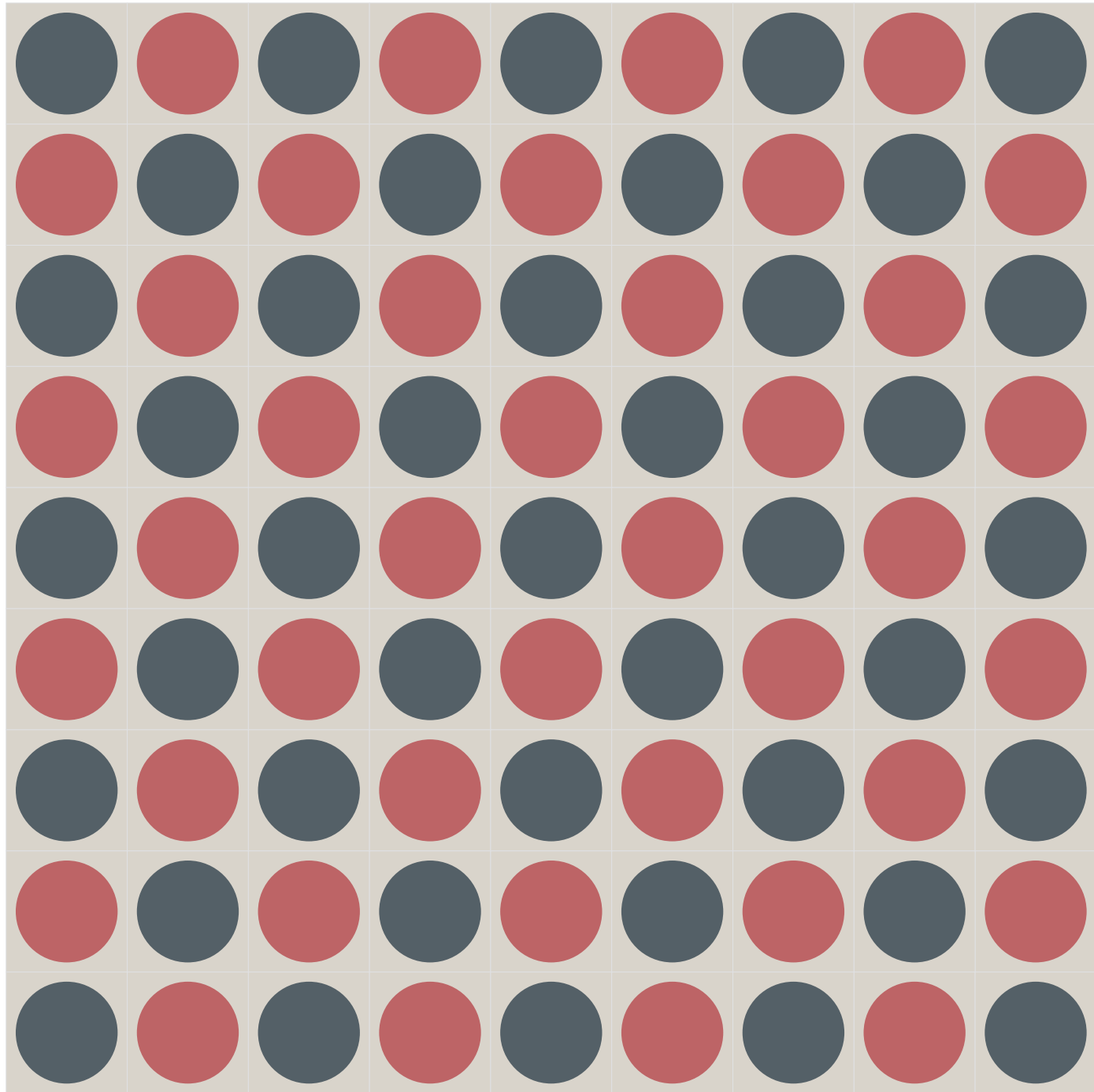










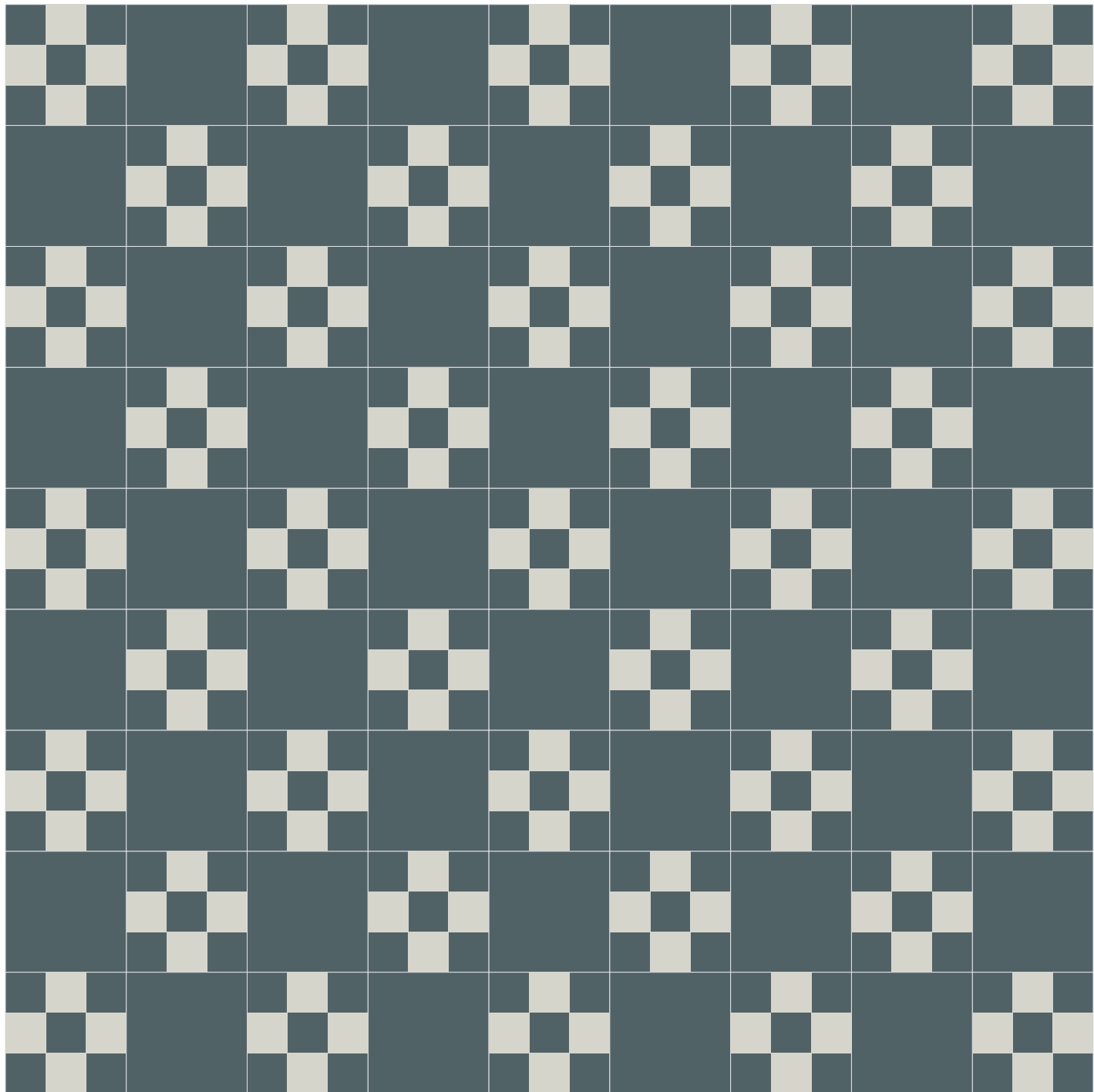
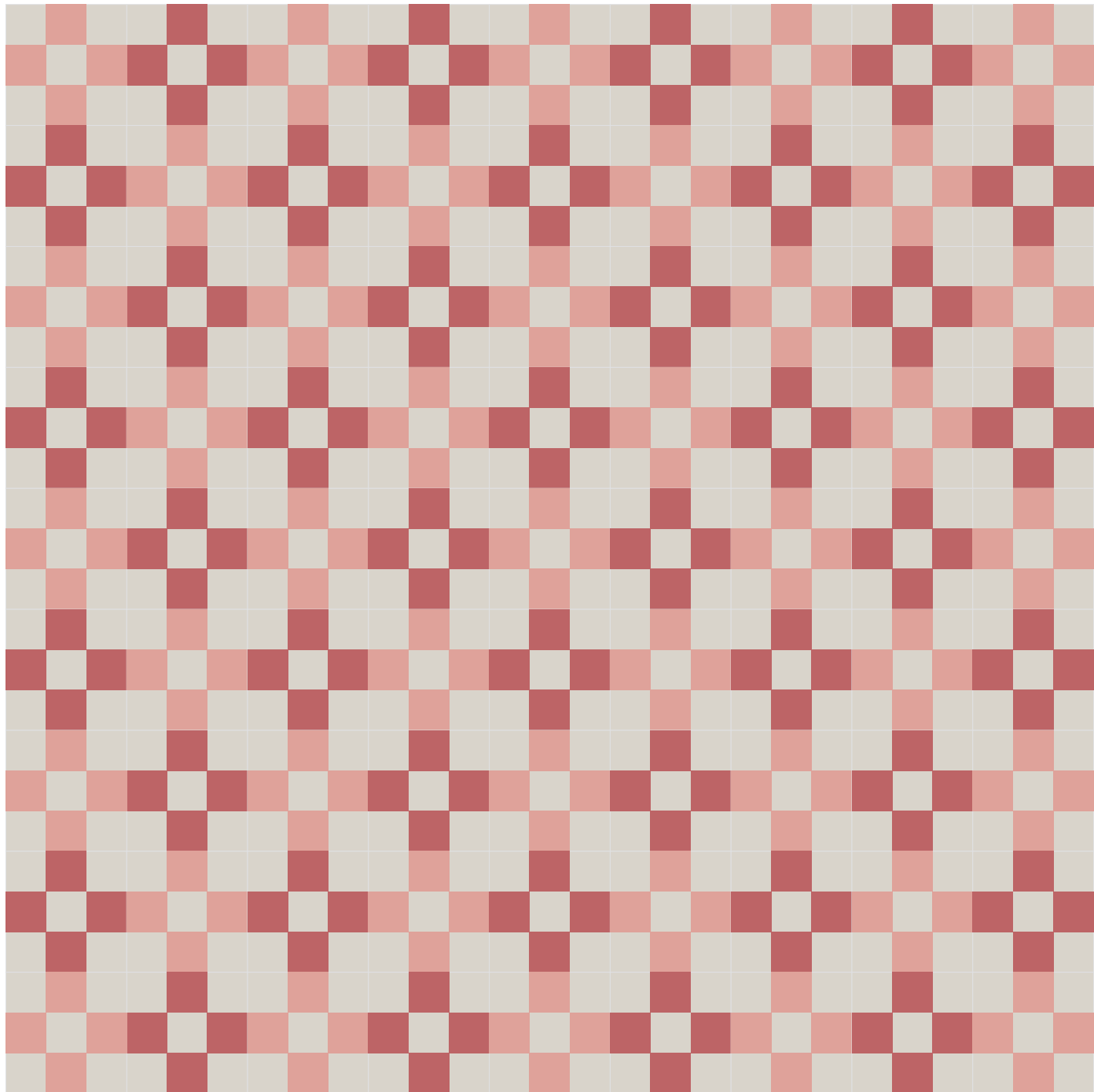


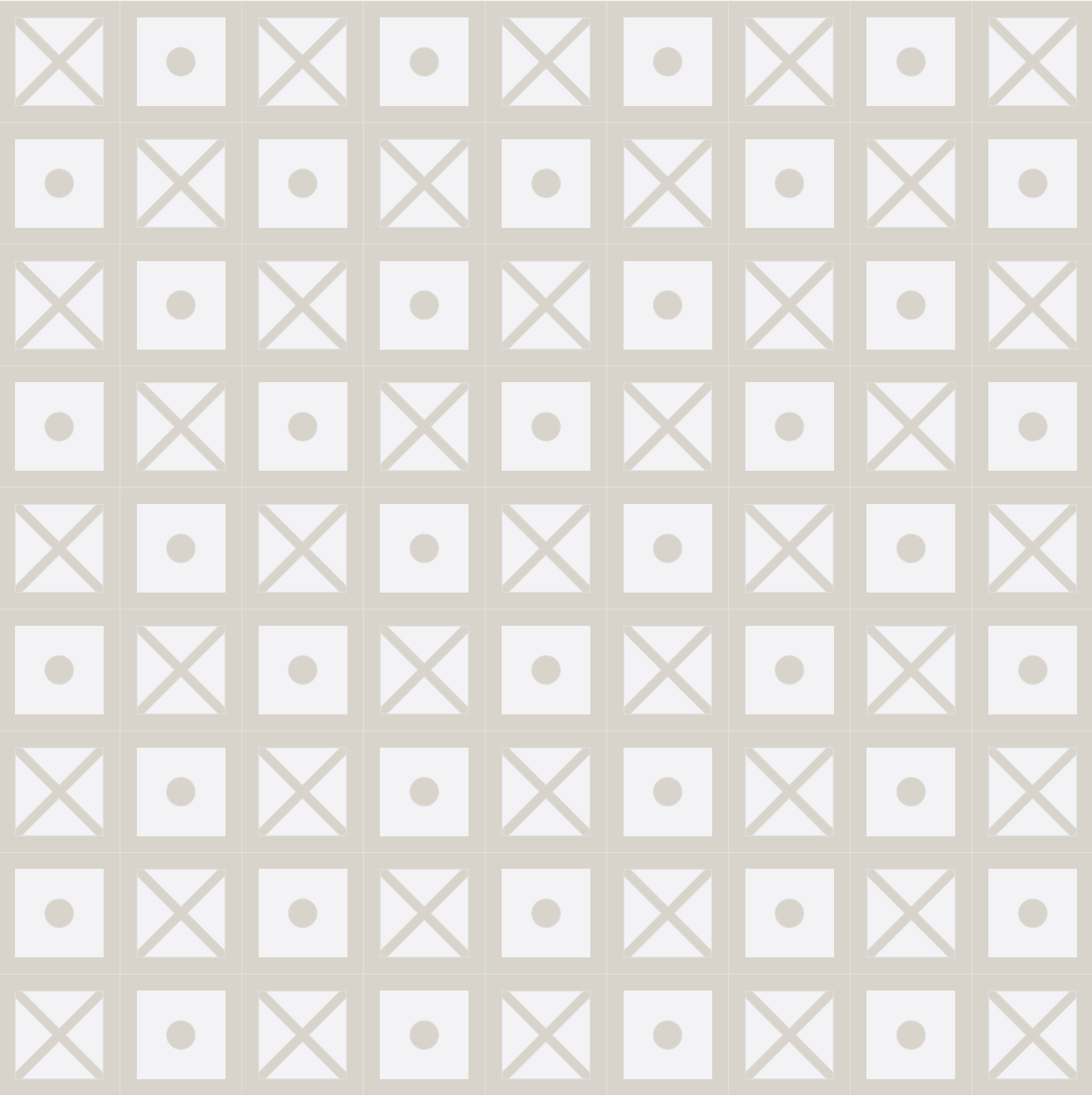
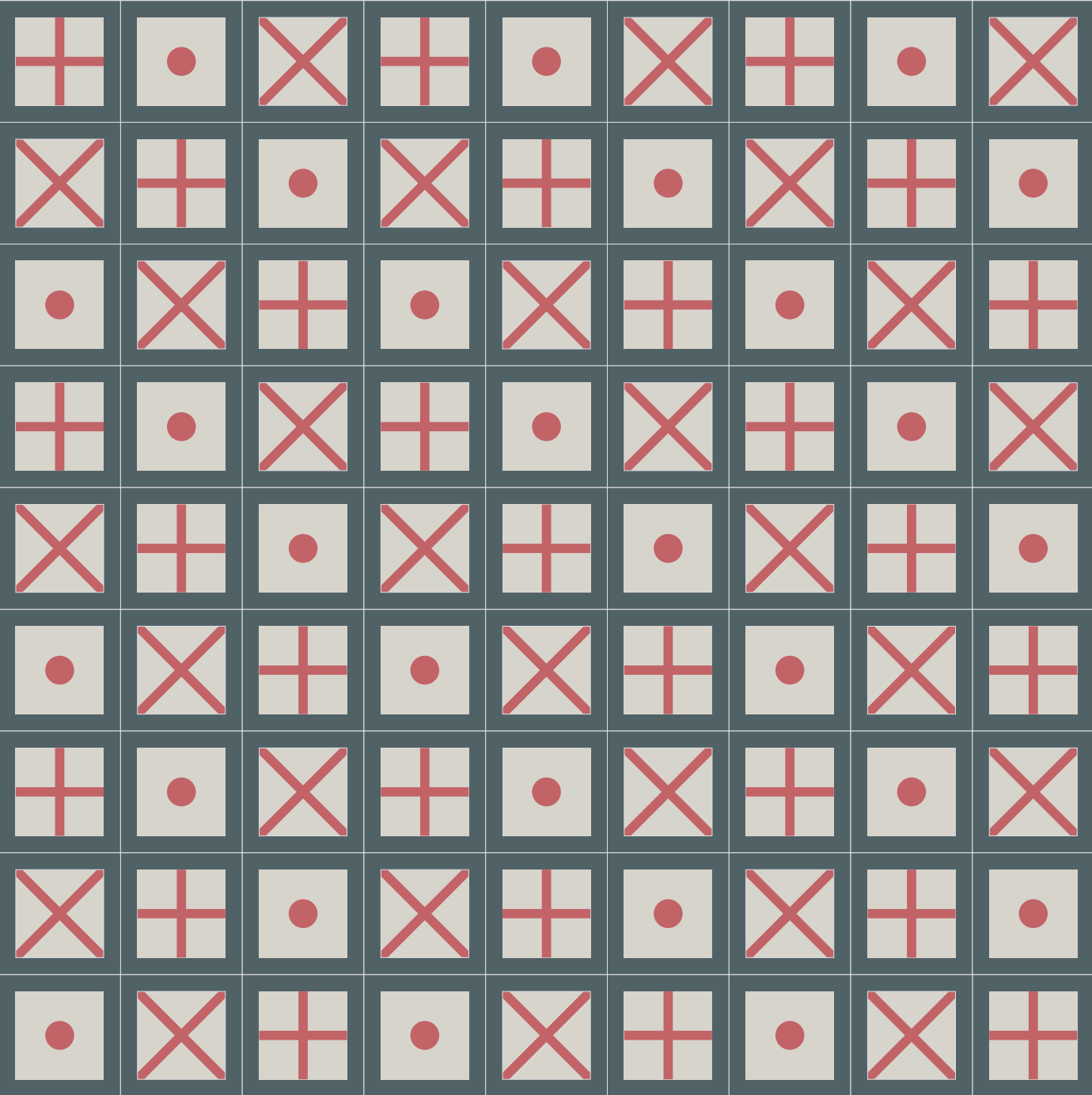


*“Less is  
a bore”*

*Robert Venturi*



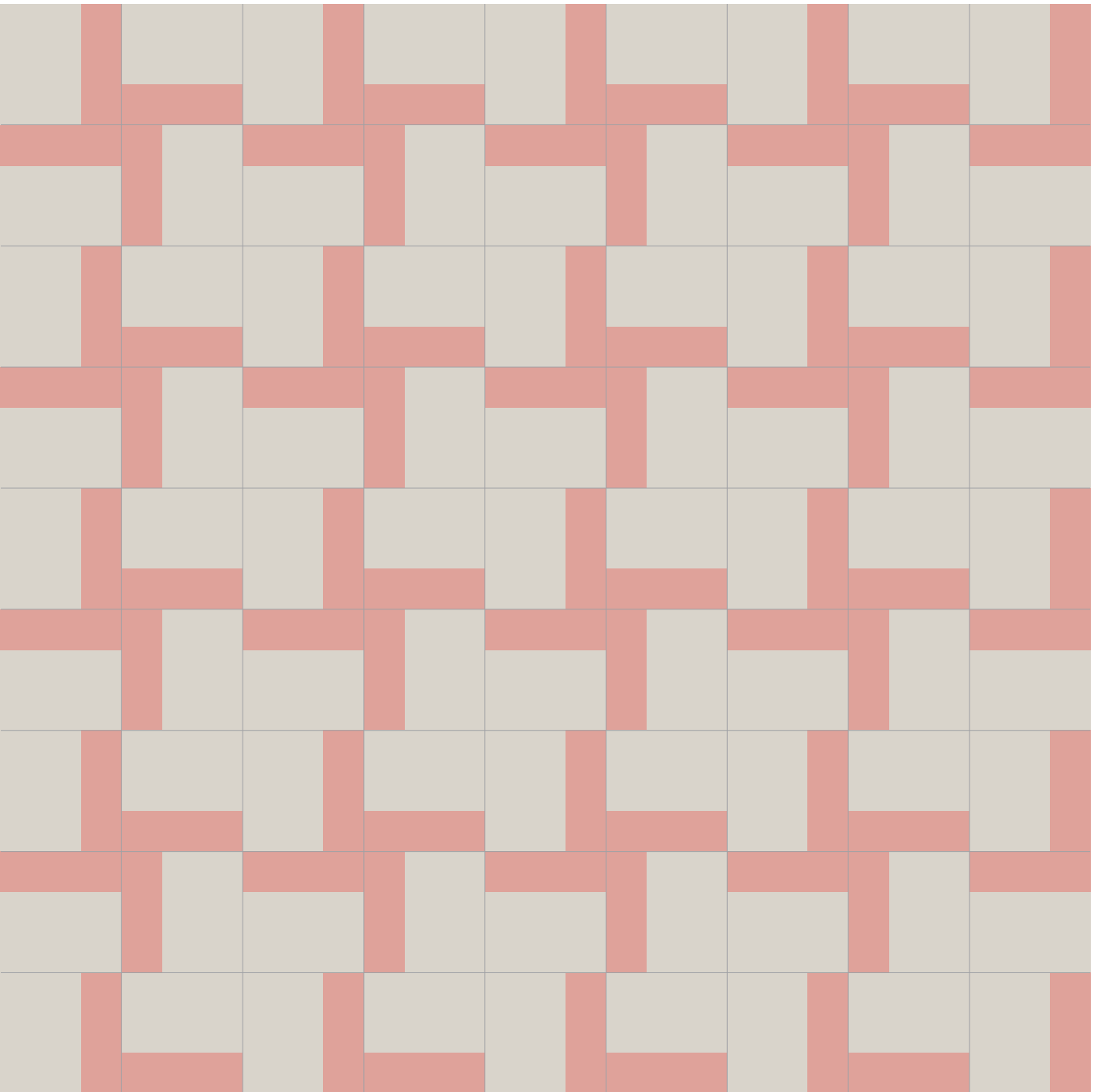
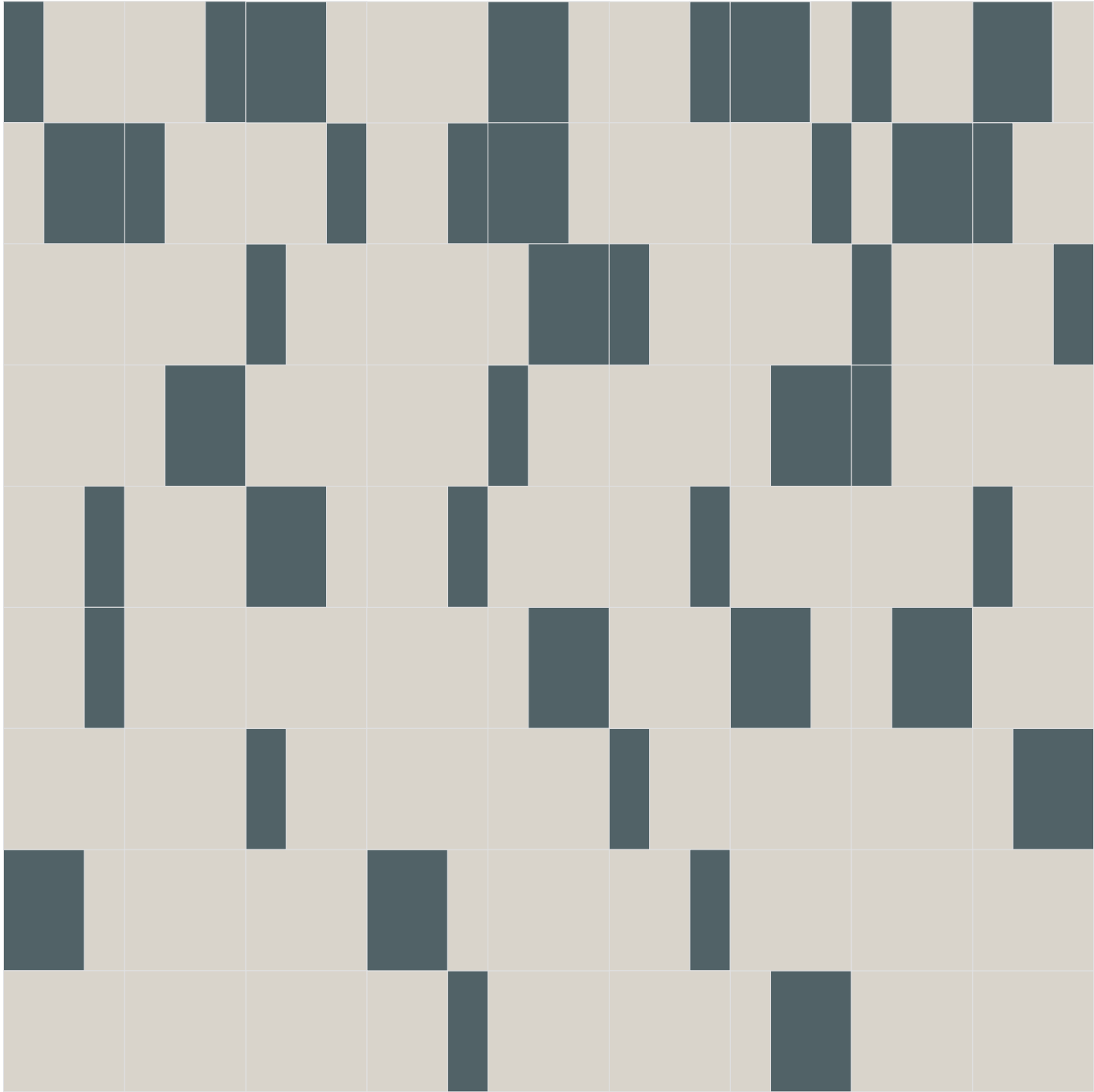


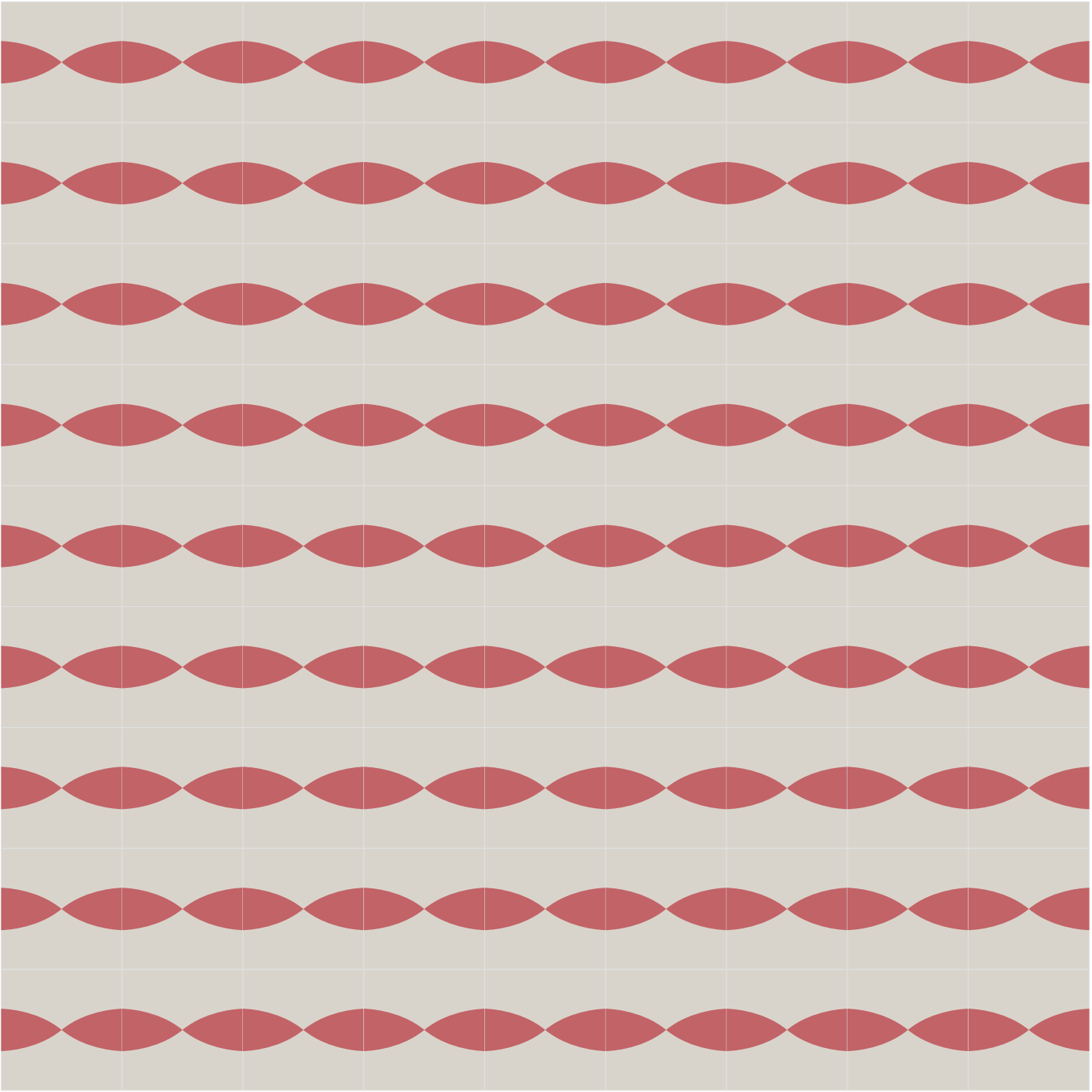
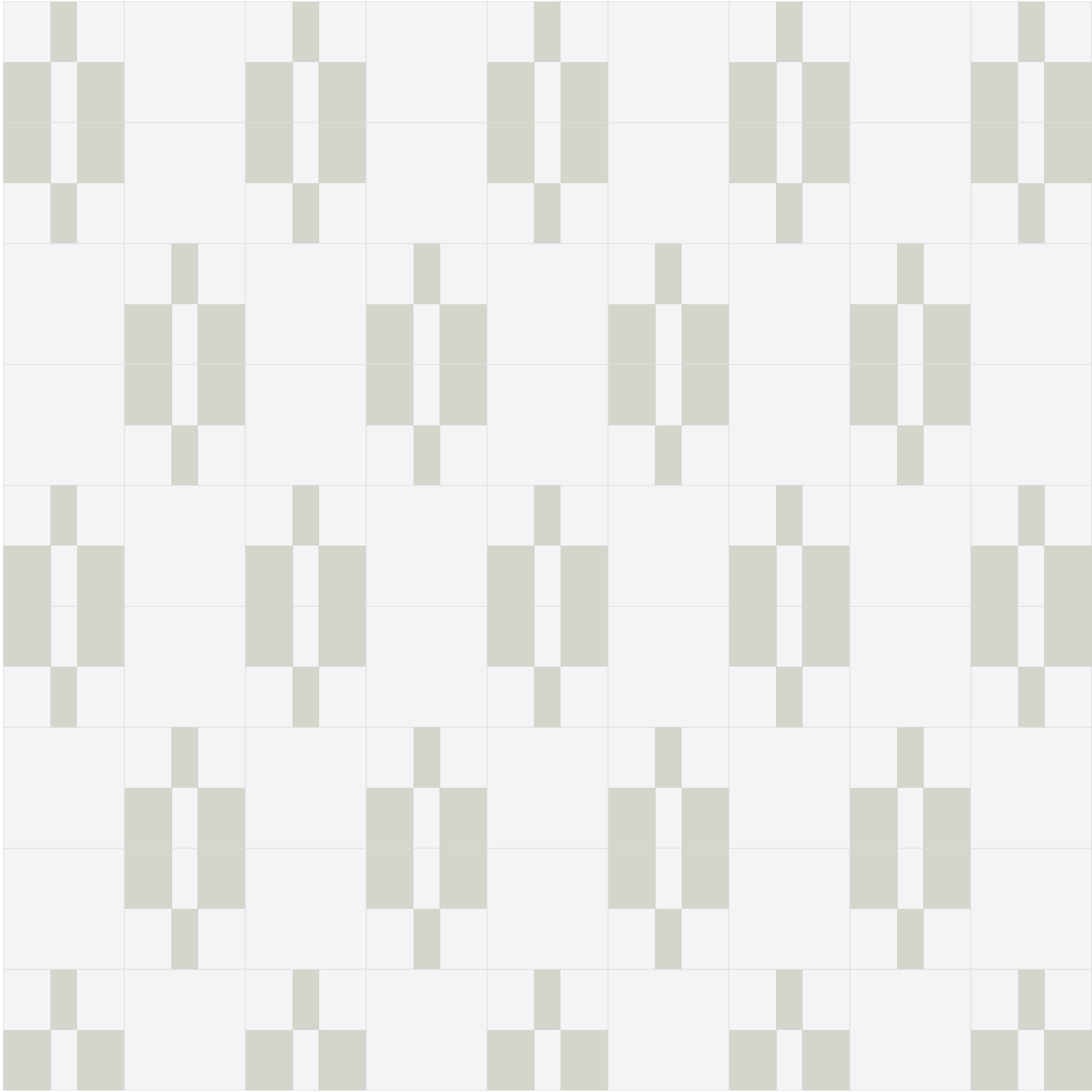




*Working with the artisan expertise of Huguet, who have been creating handcrafted tiles for 3 generations, Sybilla took a tradition from Modernist times and adapted it to the 21st century.*







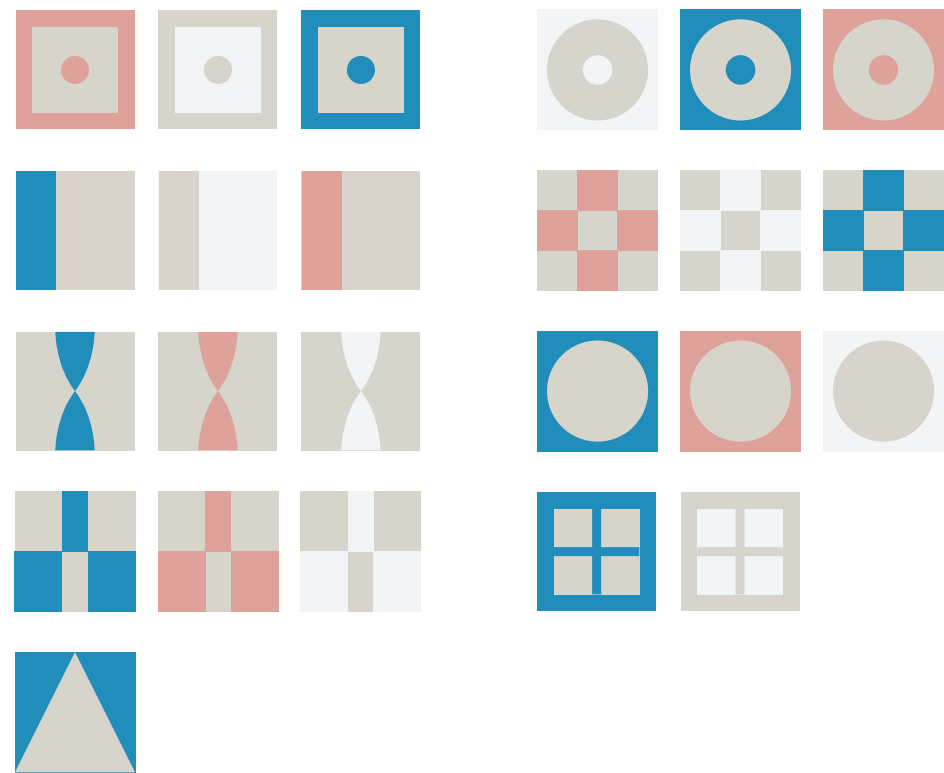


*"I've been designing clothes for the last twenty years, during which time I've tried to create the most beautiful dresses in the world, taking care of every single detail until one day I realized there were other things that made clothes beautiful. My dream now is to design clothes telling the beautiful story behind them".*

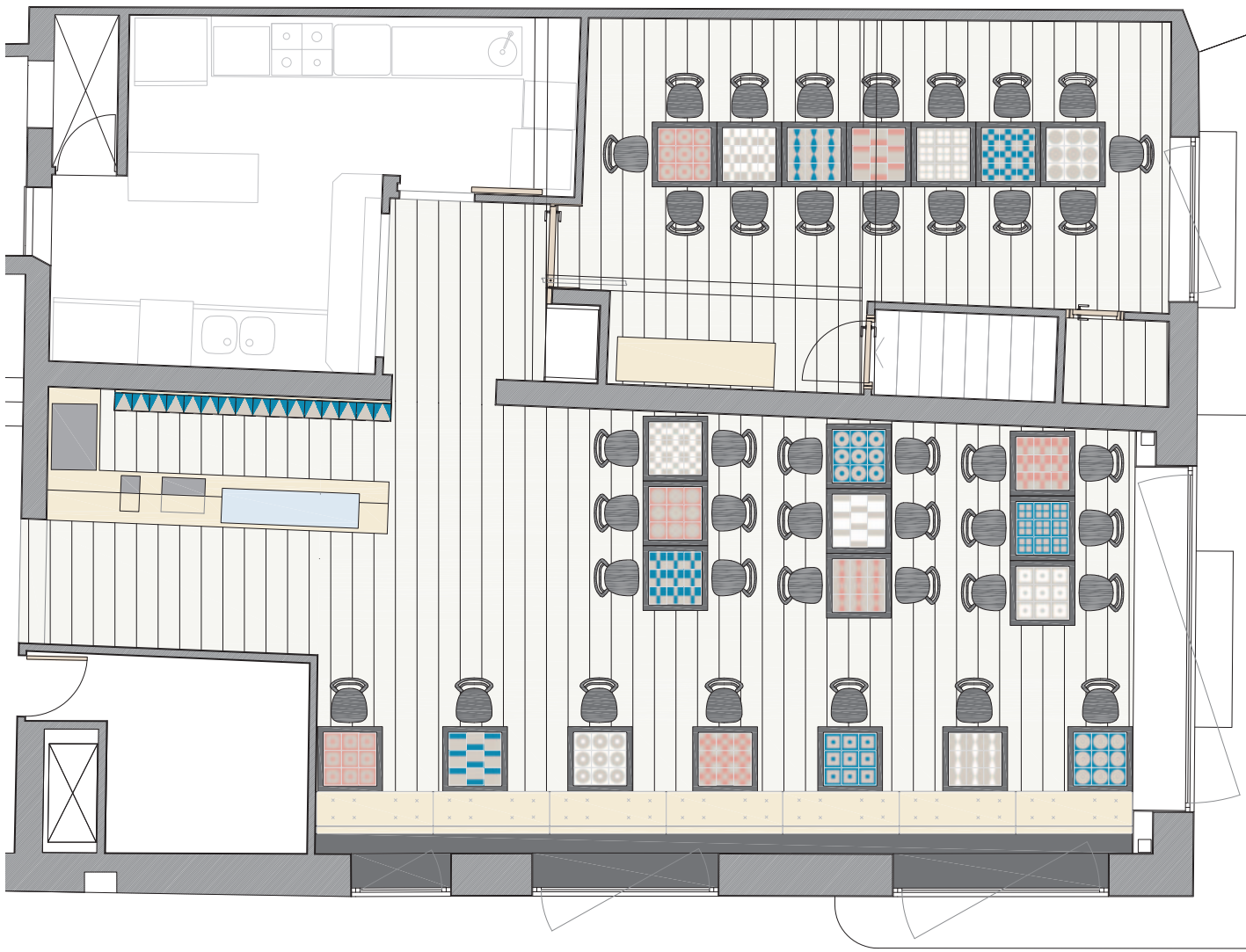
*Sybilla Sorondo*



**BAR BOSCH, Palma.**  
**By Sánchez Cantalejo + Tomás**



Shilla





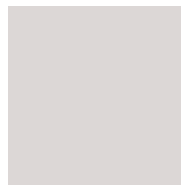




# Colours



WHITE



PASTOR GREY  
Pantone U 7527



BLACK



STANDARD  
GREEN  
Pantone U 7494



C GREEN  
Pantone U 2304



ADROVER  
BLUE  
Pantone U 7706



SANDY PINK  
Pantone U 2338



RED  
Pantone U 7619

## Additional colours available on request.

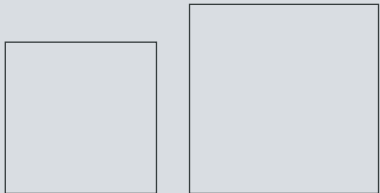
Real colours may vary slightly from the images shown.  
Small variations in shade are a distinctive feature of these tiles,  
thereby enhancing their artisan character.

Please note that all pantone number references given in our catalogues are indicative.  
Please request samples to see the true colour.

*Good tiles  
go  
everywhere*



# SPECIFICATIONS



20 x 20

25 x 25

\*Dimensions in cm.

YOU CAN SEE MANY  
DIFFERENT OPTIONS  
AND COMBINATIONS  
ILLUSTRATED IN OUR  
CATALOGUE

### MATERIAL SPECIFICATION

The ‘Sybilla’ Collection is an hydraulic tile designed by the prestigious fashion designer, Sybilla. This paring typical of the mediterranean offers a wide range of colours and finishes. Due to its artisan production, there may be slight variations in colour tone, thickness or size. Please also note that (as a cement based material) tiny shrinkage cracks may appear these do not affect the quality or performance of the pieces.

### OUTER FACE COMPOSITION

Cement  
Marble Powder  
Dye

### BACK FACE COMPOSITION

Cement  
Agregate

### RECOMMENDED USES

Walls and floors  
Interior (dry and wet)  
Exterior

### WEIGHT

37 Kg/m<sup>2</sup>

### FINISHES

Smooth/Matt  
Aged  
Non-slippery

### LAYING & GROUTING TILES\*

#### Mortar

A wide range of products are available depending on the floor type (Standard concrete slab systems, underfloor heating, floor with structural movements, etc.)

#### Mortar thickness

If the slab is well-levelled a notched trowel with 1 cm teeth is sufficient.

#### Grout

Standard joint material (cement-based).

#### Joint width

1 – 1.5 mm.

#### Filling joints

Joints between tiles must be filled up to the top.

### SEALING AND WAXING\*

In case of outstanding work to perform it is recomended to leave the tile flooring protected with breathable products that do not stain the tiles. Treatment should be undertaken when the floor is completely dry. It can have different finishings. Sealing could be done at our factory under request.

### MAINTENANCE\*

Made from natural materials tiles improve its qualities with age. There are also several chemical products available in the market today, its natural performance can be improved or speeded up. It is recommended regular cleaning with water and some ammonia. Thanks to this treatment, pavement gets its natural shine and protection. Agressive products such as descaling or acidic products should not be directly applied.

### TECHNICAL DATA - DECLARATION OF CONFORMITY

#### HUGUET

BREAKING STRENGTH	ABRASION RESISTANCE	IMPACT RESISTANCE	WATER ABSORPTION**	FROST RESISTANCE	SLIP RESISTANCE	SURFACE FLATNESS	DIMENSIONAL VARIATIONS
6,8N/mm <sup>2</sup>	20,7 mm	600 mm	0,06 gr/cm <sup>2</sup>	Resistent	Satisfactory	0,2%	±0,25%

#### EN 13.748 REQUIREMENTS

> 5N/mm <sup>2</sup>	> 25 mm	Normal use > 400 mm Intensive use >500 mm	<0,4 gr/cm <sup>2</sup>	Depends on use and maintenance	Depends on use and finish	<0,3%	±0,3%
----------------------	---------	--	-------------------------	--------------------------------------	------------------------------	-------	-------

\* Please always use our laying, sealing and maintenance tips.

\*\* Depending on the sealing treatment.





*Love us!  
you won't  
regret it...*





*Handcrafting cement since 1933*

Mallorca / Barcelona

 **HUGUET**

+34 971 65 06 09  
[info@huguetmallorca.com](mailto:info@huguetmallorca.com)  
[www.huguetmallorca.com](http://www.huguetmallorca.com)