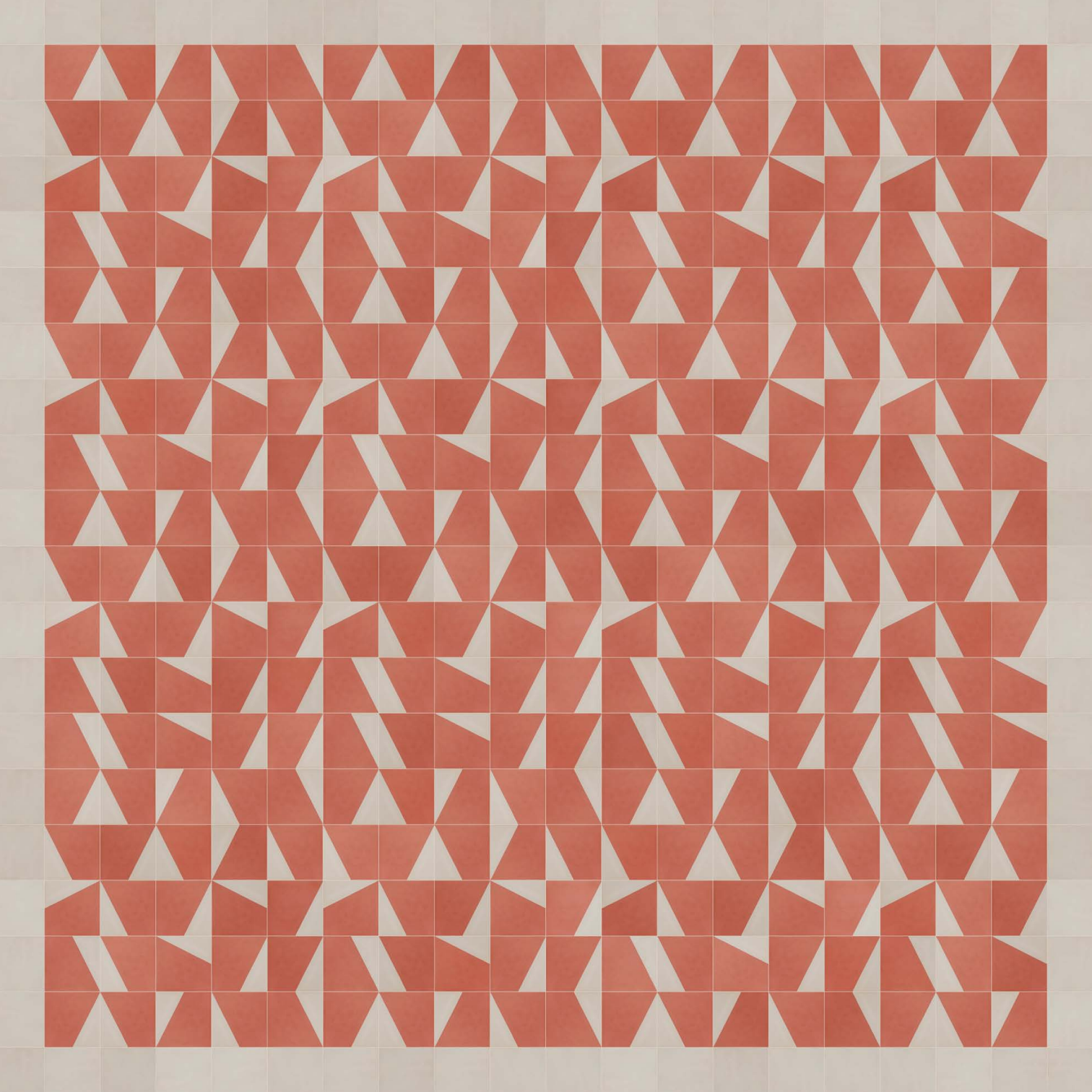


hanstile  
Sergison Bates architects

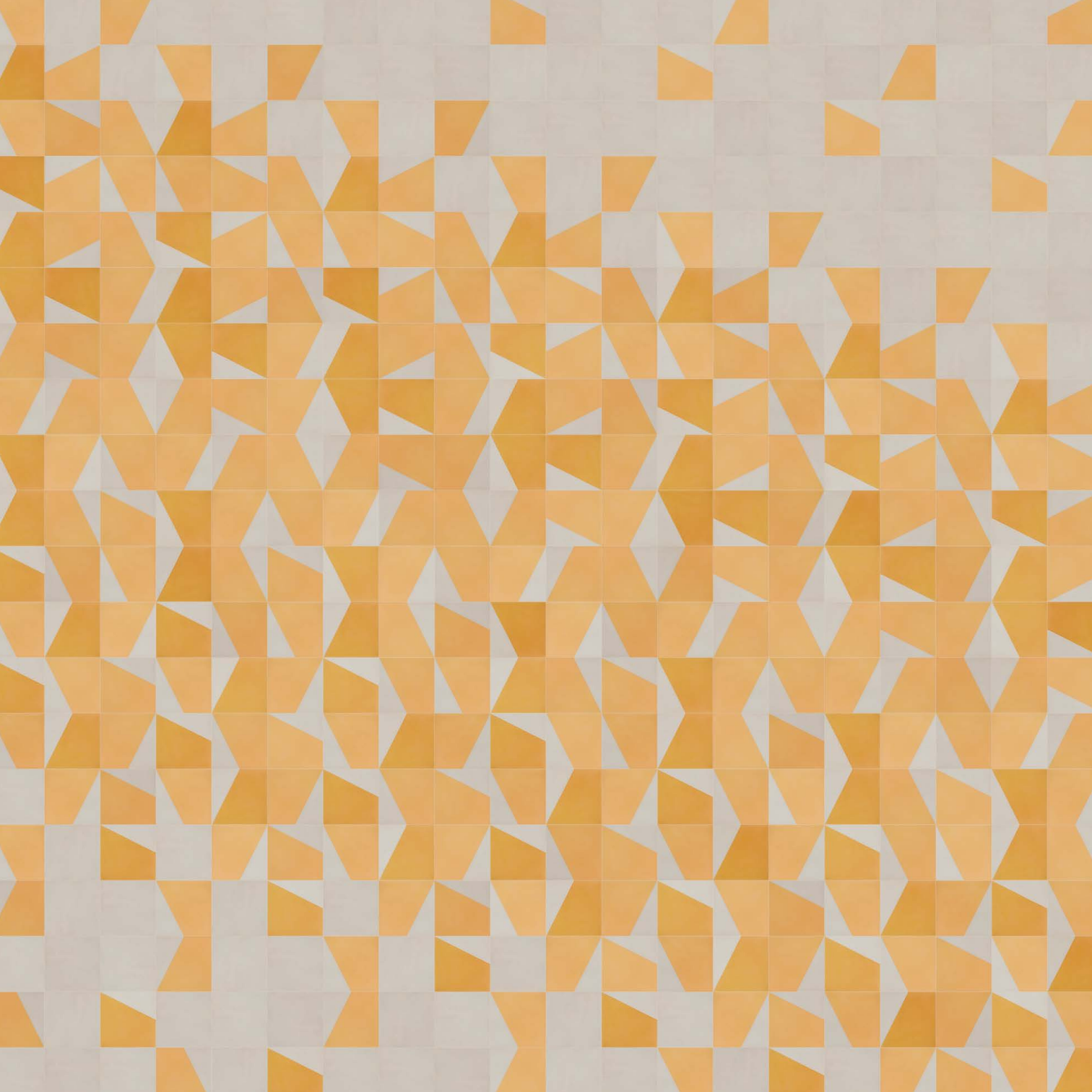


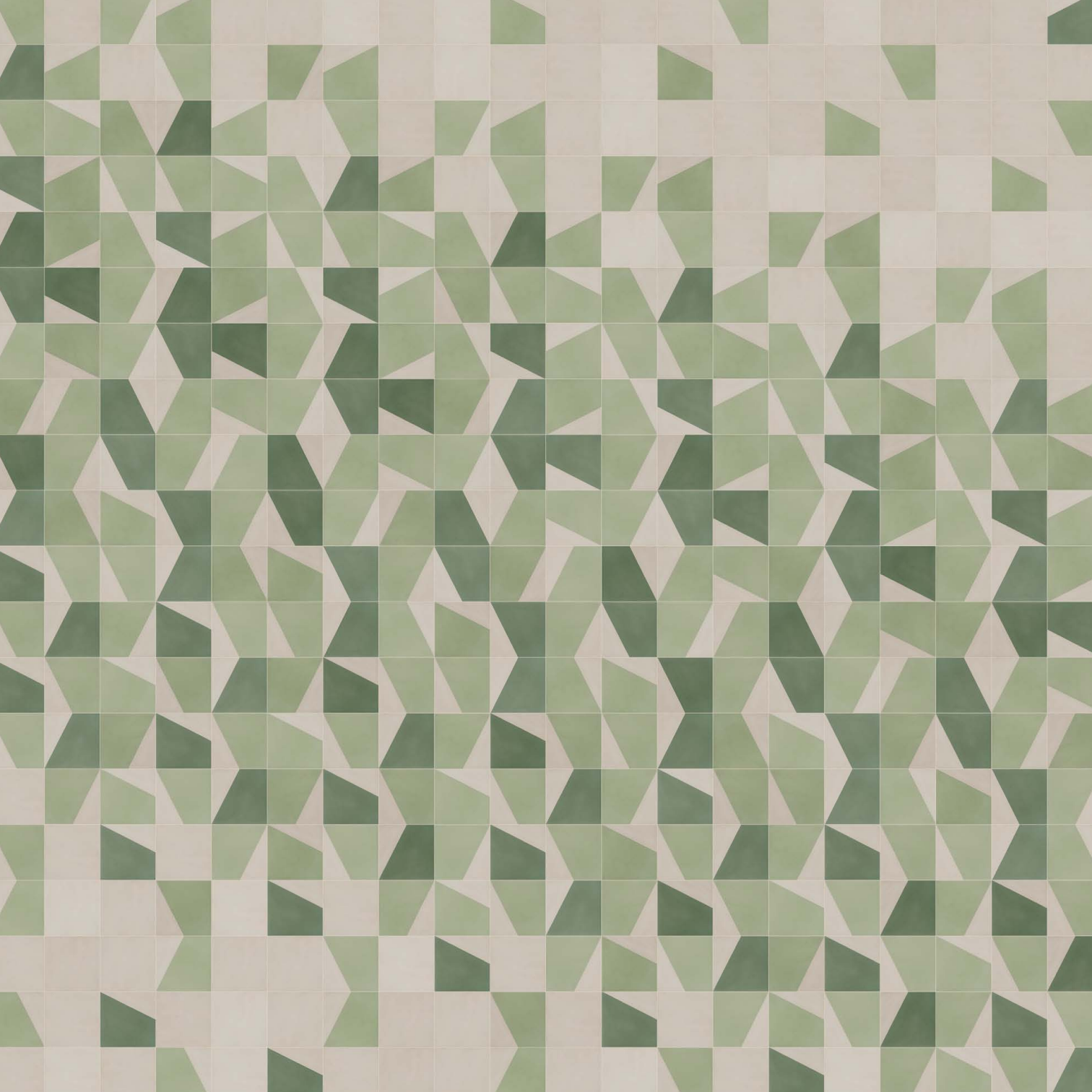


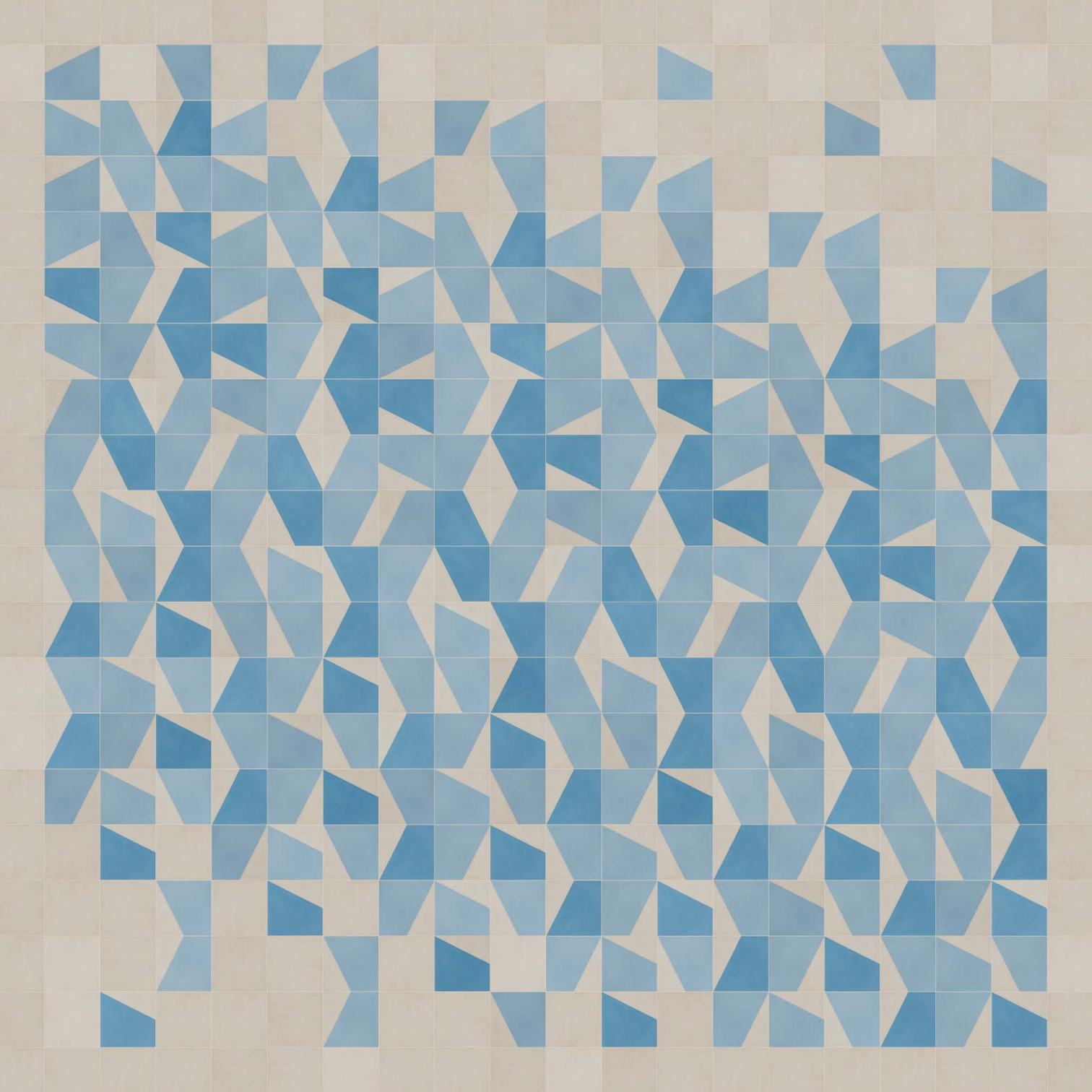




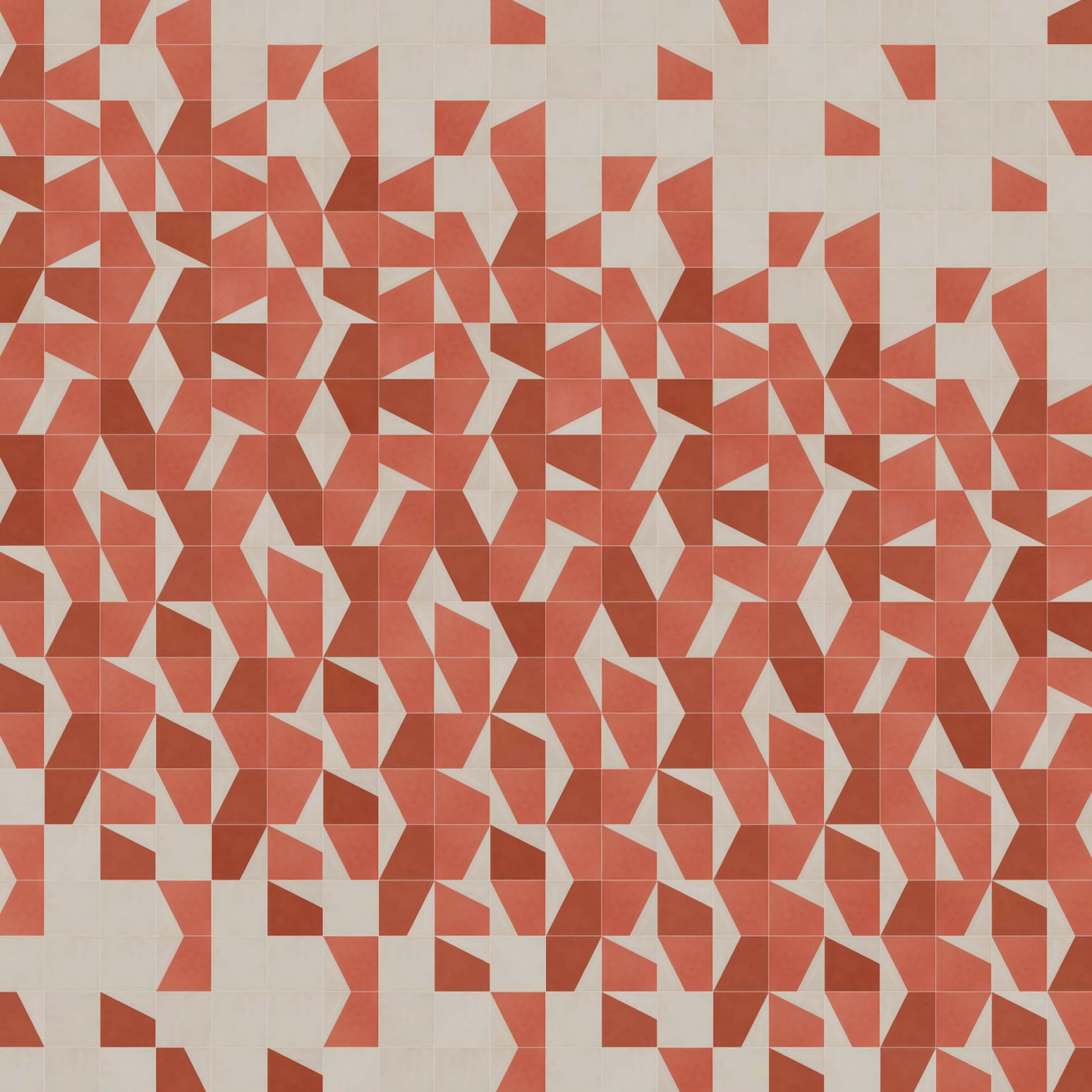




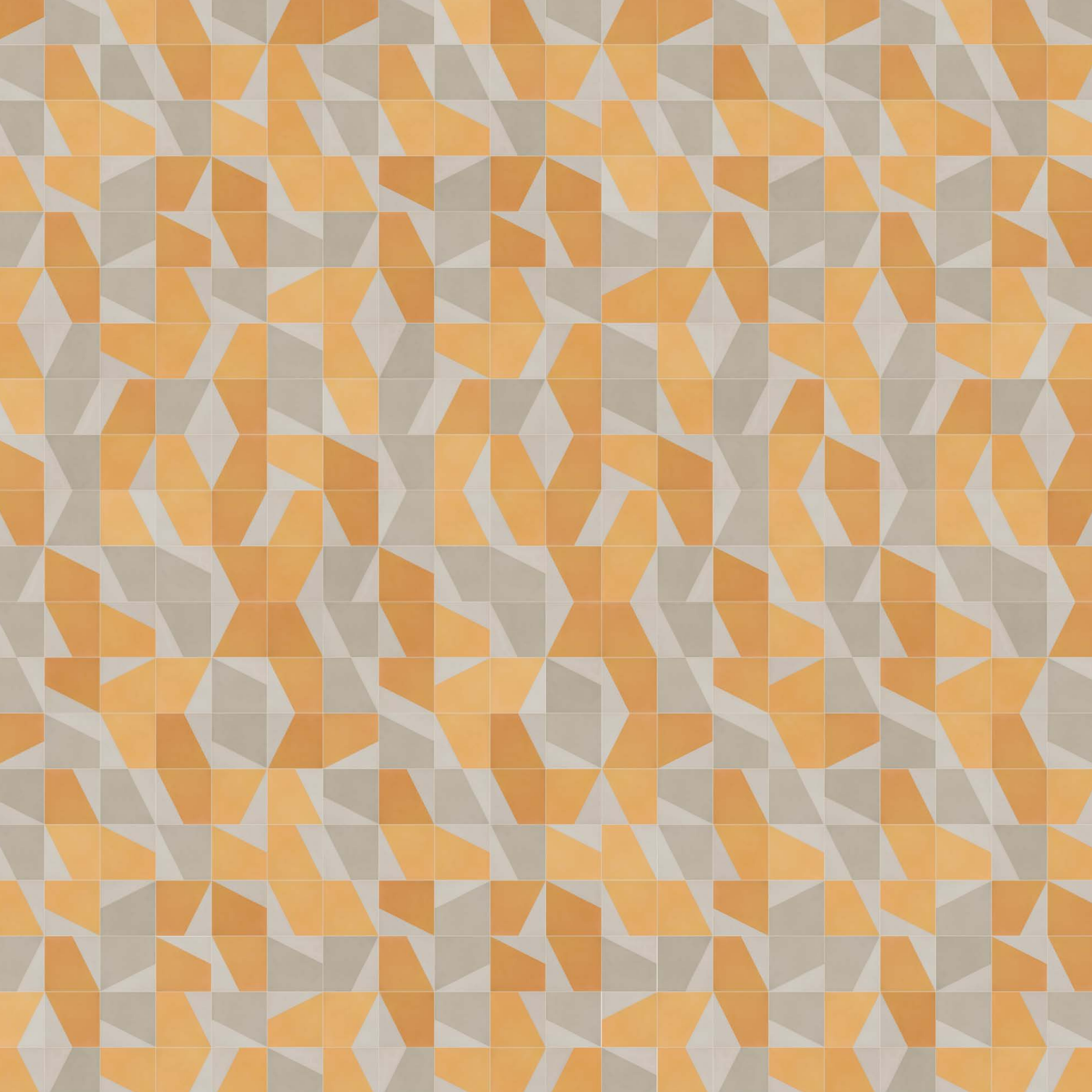


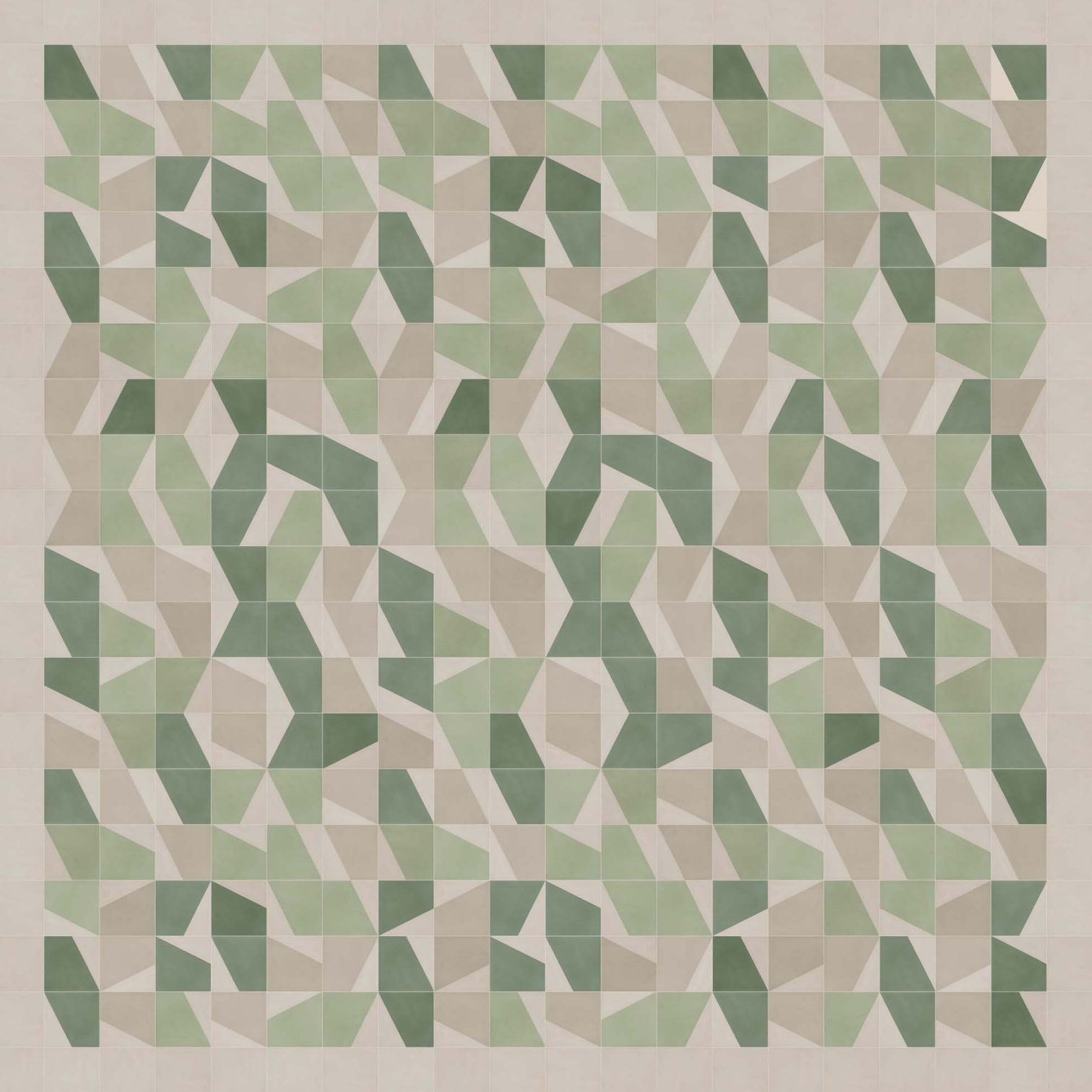


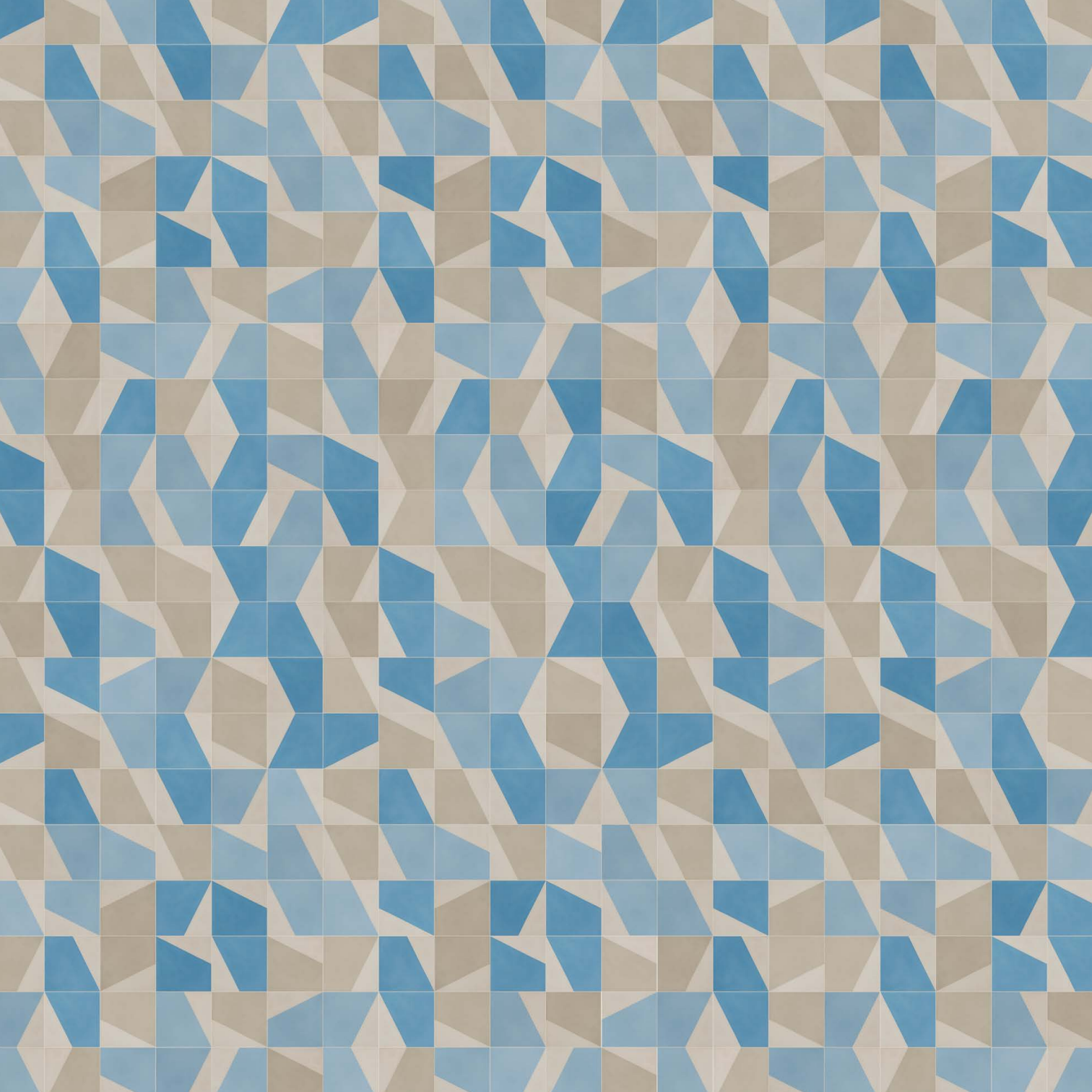








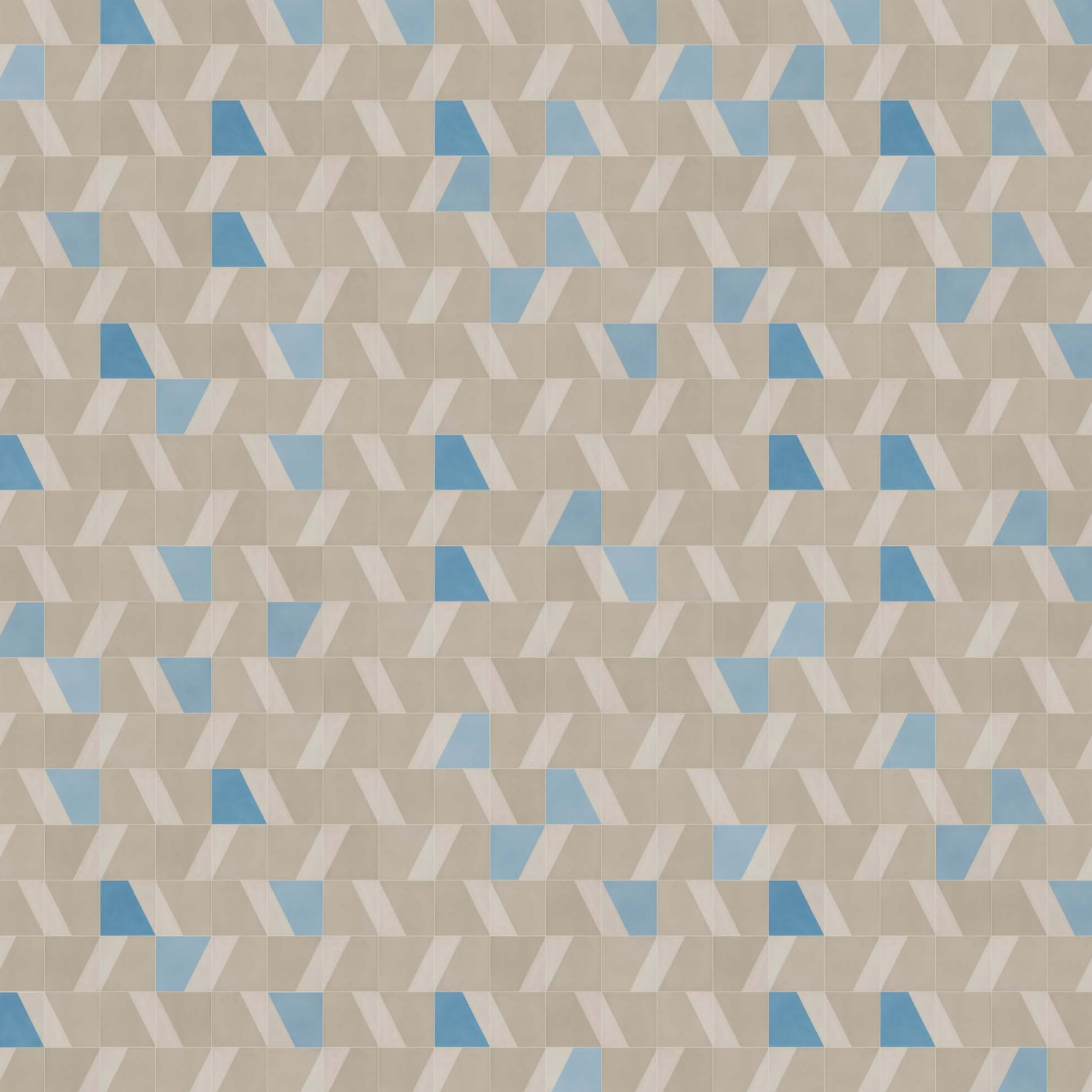


















**The Hanstile range of 20x20cm encaustic cement tiles offers an organic and flexible patterning for floors and ceilings. Dividing two colours with an offset diagonal is the simplest way of creating a wide range of asymmetrical designs. The range comprises four colours; Ochre, Leaf, Water and Brick on an Ash base which can be combined in delicate, understated patterns that have a delicate shimmer and subtle depth without relying on contrast.**

**+34 971 65 06 09**

**[info@huguetmallorca.com](mailto:info@huguetmallorca.com)**

**Cami de Ciutat Vell**

**07630 Campos, Mallorca**